

12kW inverter power consumption



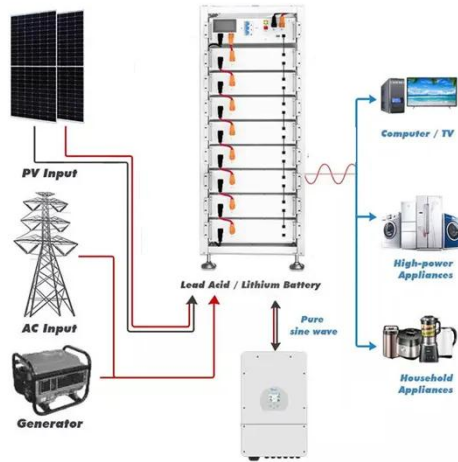
Overview

The '12kW' refers to the continuous power output, meaning it can sustainably deliver up to 12,000 watts of power. However, actual performance depends on input voltage (usually 48V DC), waveform type, efficiency rating, and cooling mechanisms. Market Positioning Sweet Spot: 12kW inverters occupy the optimal balance between residential and commercial applications, providing sufficient capacity for whole-home backup power while remaining cost-effective, with quality units ranging from \$2,899 to \$7,500 in 2025. With 21. Operating Input Current per MPPT Max. Battery Charge / Discharge Current See Installation Guide for more details on sizing array strings. Parallel up to 10 units for 80kW of output power and control multiple stations and units using ties and other battery brands. A battery firmware update is required for closed-loop communication. ⚠️ 2025 EG4® ELECTRON ECT TO CHANGE WITHOUT NOTICE. There are some times that there is no load. Does the inverter still consume the same amount of power then?

Or significantly less because it is proportional to the load?

It's hard to tell since my usage watt meters are downstream after the Luxpower 12kW hybrid for single phase simultaneously optimizes multiple PV arrays with three independent MPPT inputs, each supporting max currents of 25A, 15A, and 15A, providing a total capacity of up to 18kW PV DC input.

12kW inverter power consumption



Single Phase Hybrid Inverter 12K , On/Off Grid

Luxpower 12kW hybrid for single phase simultaneously optimizes multiple PV arrays with three independent MPPT inputs, each supporting max currents of 25A, 15A, and 15A, providing a total ...

EG4® 12 k PV HYBRID INVERTE

ALL-IN-ONE HYBRID INVERTER Capable of running entirely off the grid, using grid electricity, or selling power back to the grid.



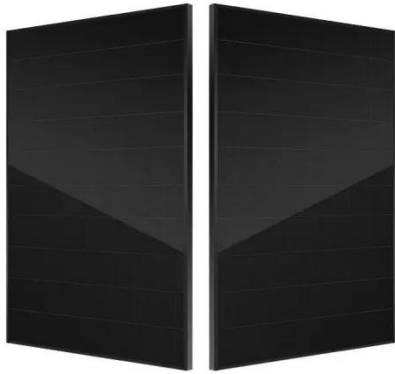
- IP65/IP55 OUTDOOR CABINET
- ALUMINUM
- OUTDOOR ENERGY STORAGE CABINET
- OUTDOOR EQUIPMENT CABINET

How much power does an Inverter use just sitting there idling?

Generally a 3 kW sinewave high freq inverter is 30 to 50 watts of full idle power. A high frequency inverter has two primary stages. First stage is high frequency DC to DC converter that ...

Deye 12kw 3 phase hybrid inverter datasheet

Environmental Sustainability: The inverter is designed to minimize environmental impact, with features such as low standby power consumption and compliance with international energy efficiency standards.



Harnessing Peak Performance: The Ultimate Guide to 12kW Full ...

This comprehensive guide explores every facet of 12kW solar inverters--from core concepts and technical specifications to installation, maintenance, and real-world applications. By the ...

12kW Inverter Guide: Best Models, Installation & Reviews (2025)

Peak Efficiency: Top-tier 12kW inverters achieve 95-98% peak efficiency, meaning only 2-5% of power is lost during conversion. The EG4 12kPV achieves 97.5% peak efficiency.



Inverter Usage Calculator & Formula Online Calculator



Ultra

The Inverter Usage Calculator helps users to determine the energy consumption of their inverter systems, which is crucial for managing electricity bills and assessing power needs.

12K-2P Datasheet (EN)

DATASHEET 12K-2P-N Residential Hybrid Inverter See Installation Guide for more details on sizing array strings. The highest input voltage is based on the open-circuit voltage of the array at the ...



Envy True 12kW Inverter , Fortress Power Energy Control

With a 21W PV input and 12kW continuous uninterrupted output, the True 12KW offers reliable clean energy and can be expanded by paralleling up to 10 units, with a maximum of 120KW AC output.

How to Choose the Best Inverter 12kW for Your Power Needs

The '12kW' refers to the continuous power output, meaning it can sustainably deliver up to 12,000 watts of power. However, actual performance depends on input voltage (usually 48V DC), ...



Contact Us

For catalog requests, pricing, or partnerships, please visit:
<https://www.kidsandparents.pl>

