

# 400W solar energy length and width



## 400W solar energy length and width

---

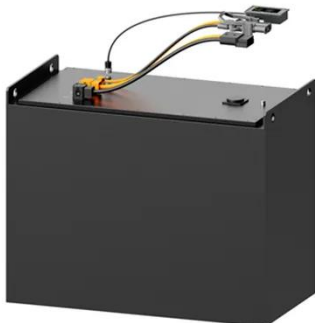


### Solar panel dimensions 400w in meters

In terms of actual size, the dimensions of a 400W solar panel can vary across manufacturers and models. However, a common dimension for a 400W solar panel is roughly 2 square meters. This size ...

### 400 Watt Solar Panel: Everything You Need to Know

A typical 400W solar panel size measures between 1,720-1,762 mm in length and 1,134 mm in width, with a surface area of about 2 square meters. These average solar panel sizes make them suitable ...



### Exploring the Size of a 400 Watt Solar Panel

Understanding the size of a 400 watt solar panel is essential for anyone considering solar energy solutions. With dimensions that typically measure around 65 inches by 39 inches, these ...

## Solar Panel Size & Dimensions Guide 2025 , Complete Specs

Standard Residential Panels Optimize Space and Handling: The industry-standard 60-cell panel dimensions (65" x 39" x 1.5") aren't arbitrary - they represent the optimal balance between

...



### How Big Is a 400W Solar Panel?

Determining Dimensions and Factors Involved. The typical size of a 400W solar panel falls within a range, usually around 65-85 inches long and 39-45 inches wide, but specific dimensions ...

### 400-Watt Solar Panels: Everything You Need To Know

Physically, most 400-watt panels contain between 60 and 66 solar cells and typically measure around 5.4 feet in length and 3.25 feet in width. These panels are becoming increasingly ...



### Standard Solar Panel Sizes And Wattages (100W-500W Dimensions)

Here are a few examples of the



dimensions of the most popular solar panel wattages: A typical 100-watt solar panel is 41.8 inches long and 20.9 inches wide. It takes up 6.07 sq ft of area. If you have a 1000 ...

---

## 400-Watt Solar Panels: Cost, Size, Power Output & Best Uses ...

How Big is a 400-Watt Solar Panel? A 400-watt solar panel is generally larger than smaller solar panels such as 100 watt or 300 watt panels, but not as large as high-output options like ...



---

## How Big Is a 400W Solar Panel?

Typically, a 400w solar panel measures around 79 inches (200 cm) in length and 40 inches (101 cm) in width. The thickness generally falls between 1.4 to 1.8 inches (3.5 to 4.5 cm), ...

---

## How Big is a 400W Solar Panel? Key Facts and Insights

A typical 400-watt solar panel measures

approximately 1.7 meters by 1 meter (or about 67 inches by 39 inches). However, dimensions can differ slightly based on the manufacturer and the ...



---

## Contact Us

For catalog requests, pricing, or partnerships, please visit:  
<https://www.kidsandparents.pl>

