

# 50km communication base station lead-acid battery



## 50km communication base station lead-acid battery

---



### Communication Batteries: Why Telecom Base Stations Have Unique ...

In modern telecom networks, ensuring uninterrupted connectivity is critical. The term "communication batteries" is often used ambiguously online, leading to confusion among operators, ...

---

### Communication Base Station Backup Power LiFePO4 Supplier , Grepow

From lead-acid batteries to LiFePO4 (replacement tide) is derived from the new requirements for the expansion and upgrade of the power supply in the field of communications storage.



---

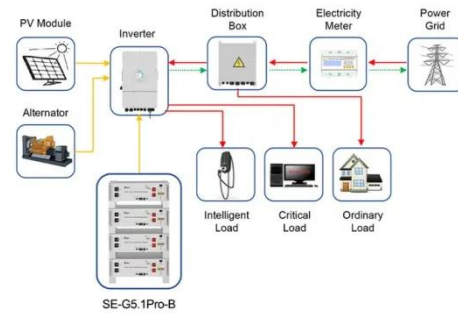
### Communication Base Station Energy Storage Battery Strategic Market

The communication base station energy storage battery market is experiencing robust growth, fueled by the expanding deployment of 5G networks and the increasing demand for reliable ...



## Can a 24V 50Ah LiFePO4 battery be used in communication base stations

In conclusion, a 24V 50Ah LiFePO4 battery can definitely be used in communication base stations, especially those with lower power requirements. Its long cycle life, high energy density, wide ...



Application scenarios of energy storage battery products

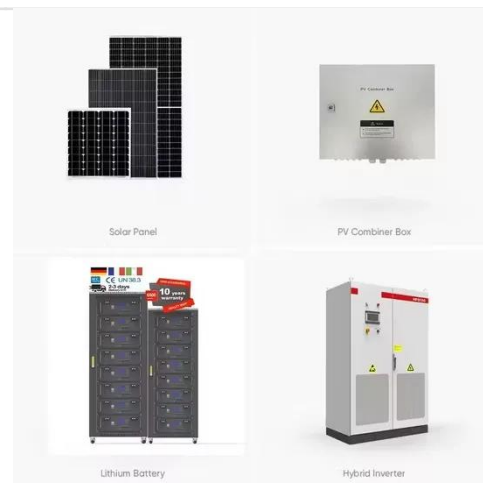


## Lead-Acid Batteries in Telecommunications: Powering

Lead-acid batteries, with their reliability and well-established technology, play a pivotal role in ensuring uninterrupted power supply for telecommunications infrastructure. This article explores how lead-acid ...

## Communication Base Station Backup Power LiFePO4 Supplier , Grepow

Why Lifepo4 Battery as A Backup Power Supply For The Communications Industry?The Lifepo4 Battery Manufacturer of For Communication Backup PowerWhy Choose Grepow Custom Communications Backup Power?1. Grepow high C-rate LiFePO4 battery has a higher discharge efficiency, explosive enough, and has



better temperature stability and resistance. 2. Grepow LiFePO4 cells using the stacking process, the internal resistance is smaller, with a better voltage working platform. 3. Grepow LiFePO4 battery is with discharge rate to meet the highest instantan See more on grepow lvwo-energy

## **Can a 24V 50Ah LiFePO4 battery be used in communication base ...**

In conclusion, a 24V 50Ah LiFePO4 battery can definitely be used in communication base stations, especially those with lower power requirements. Its long cycle life, high energy density, wide ...



## **Global Lead-acid Battery for Telecom Base Station Supply, Demand ...**

Among lithium-ion batteries, lithium iron phosphate batteries with higher cost performance are now favored by communication base stations. This report studies the global Lead-acid Battery for ...

---

## **Communication base station lead-acid battery lead-acid**

Lead-acid batteries for telecom base stations are designed to provide reliable

backup power in case of grid failures. These batteries are typically characterized by high capacity, long lifespan, and robust ...

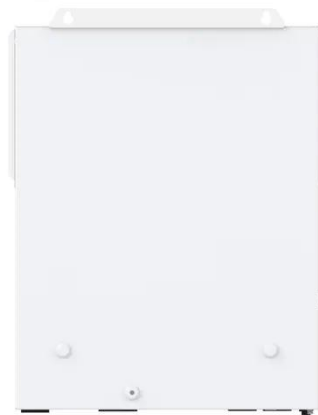


## Communication Base Station Lead-Acid Battery: Powering ...

In an era where lithium-ion dominates headlines, communication base station lead-acid batteries still power 68% of global telecom towers. But how long can this 150-year-old technology sustain our ...

## Telecommunication Battery

Valve-regulated sealed lead-acid batteries are currently the most mainstream and widely used lead-acid base station telecommunication batteries. These batteries consist of multiple battery ...



## Contact Us

For catalog requests, pricing, or partnerships, please visit:

<https://www.kidsandparents.pl>

