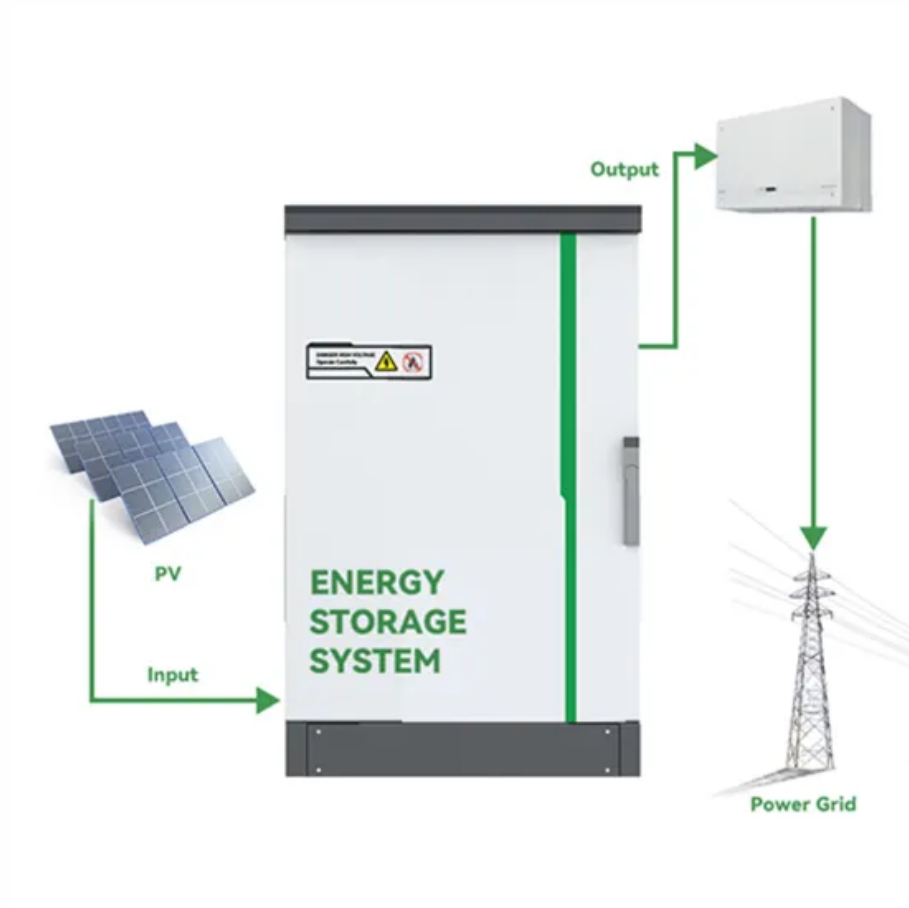


510w photovoltaic panel specifications



Overview

The Jinko 510W Solar Panel (JKM510M-7TL4-V) features a crystalline cell type with 144 cells, dimensions of 2206mm x 1122mm x 35mm, and a weight of 28. The module has a maximum power output of 510Wp, an open-circuit voltage of 48. modules with Tunnel Oxide Passivating Contacts (TOPCon) technology offer better low light performance. With local presence around the globe, Trina Solar is able to provide exceptional service to each customer in each market and deliver our innovative, reliable products with the backing of Trina as a strong. Based on the 210mm large-size silicon wafer and monocrystalline PERC cell, the Vertex comes with several innovative design features allowing high power output of more than 510W+. Furthermore, benefit from. Note: Your Enquiry will be sent directly to AE Alternative Energy GmbH. Solar Panel Series DHN-54Z16-DG-480~510W. Detailed profile including pictures, certification details and manufacturer PDF . If cut cells Solar Panel that are cut in half. That impr ves the module's performance and durability. Utilizing advanced Tiling Ribbon (TR) technology and a half-cell configuration, this panel minimizes cell gaps, achieving up to 21.

510w photovoltaic panel specifications

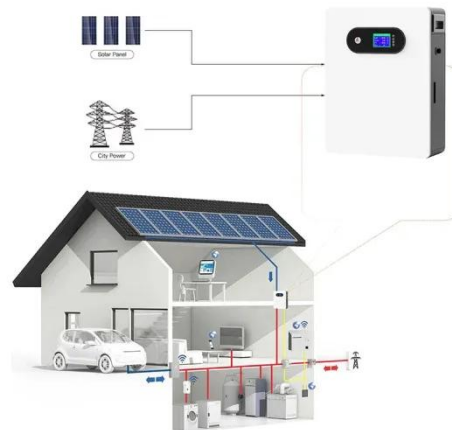


MONOCRYSTALLINE HALF CUT CELL SOLAR PANEL 510W

SOLAR PANEL 510W If cut cells Solar Panel that are cut in half. That impr ves the module's performance and durability. When solar cells are halved, their current is also halved, so resistive ...

Jinko 510W Solar Panel (JKM510M-7TL4-V) - TSolar

The Jinko 510W Solar Panel (JKM510M-7TL4-V) features a crystalline cell type with 144 cells, dimensions of 2206mm x 1122mm x 35mm, and a weight of 28.2kg. The module has a maximum ...



Trina Vertex 485-510W Datasheet Solar Analytica Verified.pdf

Specications included in this datasheet are subject to change without notice. Version number: TSM_EN_2022_A

Topsun 510W Solar Panel Specifications

Learn about the Topsun 510W solar panel. Explore solar panel efficiency, warranties and more.



Jinko Tiger Neo N-Type 510W Datasheet

Description Mechanical Characteristics Specifications (STC) *STC: Irradiance 1000W/m², Cell Temperature 25°C, AM=1.5

60HL4-V 490-510 Watt

ad Enhanced Certified to withstand:
5400 Pa front side max static test load;
2400 Pa rear side max static test load. See Drawings
*Note: For specific dimensions and tolerance ranges, please refer to the corresponding ...



510W 515W 520W 525W 530W Mono Solar Panel

2 times of industry standard Anti-PID test by TUV SUD. Higher performance under low light environment conditions. Ensure

the attenuation probability caused by PID phenomenon minimized. 510W Mono

...



DAH Solar , DHN-54Z16-DG-480~510W , Solar Panel Datasheet ...

Detailed profile including pictures, certification details and manufacturer PDF.



Trina Solar , Vertex 500 w TSM- DE18M (II)

Based on the 210mm large-size silicon wafer and monocrystalline PERC cell, the Vertex comes with several innovative design features allowing high power output of more than 510W+. Excellent ...



JKM490-510N-60HL4-V- Z1C1-OC

N-type modules with JinkoSolar's HOT 3.0 technology and efficiency. 2024 Jinko Solar Co., Ltd. All rights reserved.



Contact Us

For catalog requests, pricing, or partnerships, please visit:
<https://www.kidsandparents.pl>

