

540 photovoltaic panel



540 photovoltaic panel

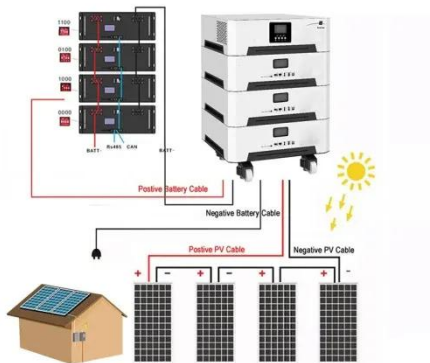


Hyperion 540W (Pallet of 36) Bifacial Solar Panels Runergy P

Maximize your energy production with the Runergy Hyperion 540W Bifacial Dual Glass P-Type Solar Panel. This Tier 1 solar panel is engineered for high performance and long-term reliability, ideal for a ...

Bluebird 540 Watt Half Cut Solar Panels

What is 540W Half Cut Solar Panels? A 540W Half-Cut Solar Panel refers to a photovoltaic panel that has a power output of 540 watts and employs a "half-cut" cell design. In a half-cut design, the solar ...



Fujiyama 540W Mono PERC Half-Cut Solar Panel (Pack of 2)

Engineered with advanced half-cut cell technology, low-iron tempered glass, and a sturdy anodized aluminum alloy frame, these panels ensure superior energy generation throughout the day

540 Watt Solar Panels

Installing 540 W solar panels is simple enough, despite their larger size compared to standard panels. They typically come with a 25-year warranty, though some higher-end brands offer ...



CE UN38.3 MSDS

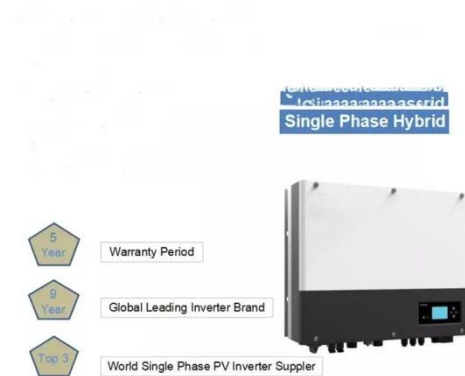


WAAREE (Pack of 31) Bi-55-540 Watt Dual Glass Bifacial Mono

WAAREE Bi-55-540 is a high-efficiency solar panel delivering 540 watts of power. Featuring dual glass construction and bifacial Mono PERC technology, this panel captures sunlight ...

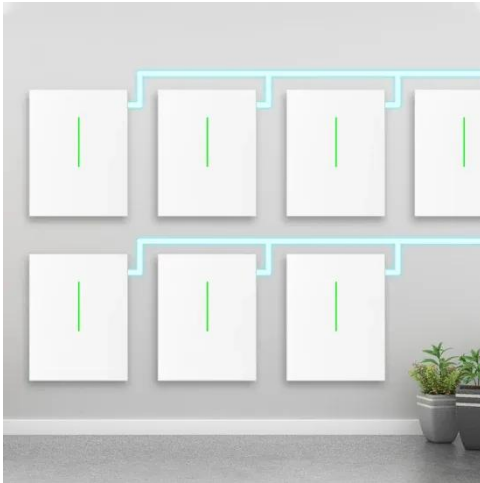
540W Solar Panels: Specifications, Efficiency, and Cost-Benefit

540W Solar Panels deliver high efficiency, durability, and cost savings for large installations, making them ideal for industrial and commercial energy needs



540W Bifacial Mono PERC Solar Panel

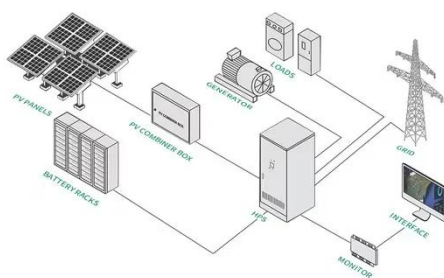
Take control of your energy costs with



our high-efficiency 540W monocrystalline solar panel. With a rated voltage of 41.39V and a rated current of 13.05A, this panel is designed to deliver ...

LONGi 540W Solar Panel Complete Guide: LR5-72HBD-540M ...

As one of the most sought-after solar panels in 2025, this comprehensive guide examines everything you need to know about the LONGi 540W, from technical specifications to real ...



High Efficiency Half-Cut 540W 550W 560W Mono PERC Solar Module

HiMAX6 solar panels integrate large 210mm half-cut cells with Mono PERC technology, delivering a high power output ranging from 575W to 605W, and achieving power efficiency up to 21.65%.

Monocrystalline Solar Panel 540 WP

The 540 watt solar panel is one of the best-rated solar panels, with high-quality 'A' grade solar cells and ultra-clear tempered glasses that are not easily broken.



540W Bifacial Mono PERC Solar Panel

Take control of your energy costs with our high-efficiency 540W monocrystalline solar panel. With a rated voltage of 41.39V and a rated current of 13.05A, this panel is designed to deliver reliable power ...

Contact Us

For catalog requests, pricing, or partnerships, please visit:
<https://www.kidsandparents.pl>

