

540 photovoltaic panels how many pieces can be dragged



Overview

Solar Panel Calculator is an online tool used in electrical engineering to estimate the total power output, solar system output voltage and current when the number of solar panel units connected in series or parallel, panel efficiency, total area and total width. 540 photovoltaic panels how many pieces can b 8 x 46 inches and tips the scales at around 72 pounds. Most modules with this output rating are monocrystalline an typically have at least 72 cells(144 half-cut cells). For a 3kW solar system, you would need either 50 100-watt solar panels, 15 200-watt solar panels, 10 300-watt solar panels, or 8 400-watt solar. Standard Test Conditions [STC]: irradiance 1000 W/m²; AM 1.5; ambient temperature 25°C according to EN 60904-3; 2. Tolerance of P_m: 0~+5W, Measuring uncertainty of power: ±3%. Performance. Bluebird Solar manufactures cutting-edge technology-based 540 Watt Solar Panels, delivering exceptional performance and efficiency. In the UK, a standard 350W residential solar panel is around 1.

540 photovoltaic panels how many pieces can be dragged

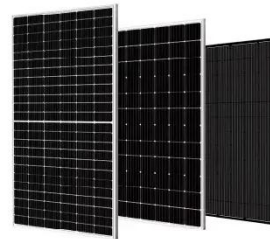


Solar Panel Power Calculator

Solar Panel Calculator is an online tool used in electrical engineering to estimate the total power output, solar system output voltage and current when the number of solar panel units connected in series or ...

40 feet container of 540 watt panels and 670W_Solar Panel

SOLAR POWER SYSTEM ALL PARTS: CABLE, SOLAR RACKING, SOLAR INVERTER WITH CONTROLLER, BATTERY. Read more commonly asked questions or learn about what solar storage is.



The weight of a 540 photovoltaic panel

Solar panels weigh around 61.73 pounds. As you may recall, these larger panels usually provide 350 to 400 watts. The weight of a solar panel per unit is an important consideration when deciding which ...

A 540 PV panel

How many cells are in a 540 watt solar panel? To give you an idea, a standard 540 watt solar panel is approximately 88 x 46 inches and tips the scales at around 72 pounds.



How to Calculate Photovoltaic Panel and Bracket Weight Like a Pro

Calculating photovoltaic panels plus bracket weight isn't just about avoiding sore muscles - it's critical for roof safety and system efficiency. Let's crack this nut with real-world examples and even some solar ...

Mono-Perc-Halfcut Solar Panel , 24V Capacity , 540 Wp Power

Livguard Solar Panels are Polycrystalline/mono perc PV panels, IEC compliant having range from 40 W - 325 W. Our Panels are ideally suited for rooftop and agricultural applications.



Complete guide to solar panel size and weigh



Portable solar panel size: portable solar panels are designed for traveling, so their size is often called small in order to facilitate carrying. Generally used size is 1350*1134*35mm, ...

540 photovoltaic panels how many pieces can be dragged

despite their larger size compared to standard panels. They typically come with a 25-year warranty, though some higher-end brands offer 30-year protection. Use our solar calculat



How Many Panels In 1kW, 3kW, 5kW, 10kW, 20kW Solar System?

How Many Panels In 1kW, 3kW, 5kW, 10kW, 20kW Solar System? (Easy)
Alright, figuring out how many panels you need for different sizes of solar systems is really easy. We will show you how to ...

Bluebird 540 Watt Half Cut Solar Panels

What is 540W Half Cut Solar Panels? A 540W Half-Cut Solar Panel refers to a photovoltaic panel that has a power output of 540 watts and employs a "half-cut" cell design. In a half-cut design, the solar ...



Contact Us

For catalog requests, pricing, or partnerships, please visit:
<https://www.kidsandparents.pl>

