

555 photovoltaic panel voltage



Overview

Rated Power: 555 W MCS Reference: BAPT 8515-218-555W Length: 2,278 mm Width: 1,134 mm Depth: 30 mm VMPP: 42. Note: Your Enquiry will be sent directly to Power Maxma. Power Maxma Solar Panel Series Topcon, N-type 555-575W. Detailed profile including pictures, certification details and manufacturer PDF . These solar panel voltages include: Nominal Voltage. This is the maximum rated voltage under direct sunlight if the circuit is open (no current running through the. ctri a h. x Xinhuatec SP wervicRo H Ct i Distr e:rms 1703 +86 4c Wux d, New. Lt Conf tUL 8, Ch 0 na9 available in the installation instruction. The. Solar panel output voltage typically ranges from 5-40 volts for individual panels, with system voltages reaching up to 1500V for large-scale installations. 35 % Downloads: The 555W JA Solar Panels are engineered to deliver high efficiency and robust performance for both residential and commercial solar power systems.

555 photovoltaic panel voltage

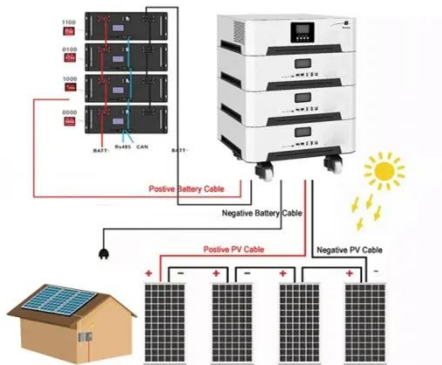


Simple PWM MPPT Circuit using IC 555

In spite of this the PWM spacing from IC2 is determined by the voltage level at its pin#5, which can be resulting from a resistive network across the panel via the 1K resistor and the 10K ...

555W Photovoltaic Panel Size: The Complete Guide for 2025 Solar

As of March 2025, over 42% of commercial solar projects in the U.S. now specify 555W photovoltaic panels as their baseline requirement according to the 2025 Solar Industry Whitepaper. But what ...



Solar Panel Output Voltage: 2025 Complete Guide & Specifications

Solar panel output voltage typically ranges from 5-40 volts for individual panels, with system voltages reaching up to 1500V for large-scale installations. The exact voltage depends on panel type, cell ...

Solar Panel Voltage Explained: Output & Regulation Guide

The voltage printed on your solar panel label (V_{mp} or V_{oc}) represents ideal test conditions (STC) -- measured in $1,000 \text{ W/m}^2$ of sunlight, 25°C cell temperature, and sea-level air ...



POWER OUTPUT MAX EFFICIENCY 535-555W 21.5%

IP68 rated (3 bypass diodes) Operating
Module Temperature -40°C to $+85^\circ\text{C}$
Maximum System Voltage 1500 V DC
(IEC) Maximum Series Fuse Rating 25 A

Solar Panel Output Voltage: How Many Volts Do PV Panel Produce?

To be more accurate, a typical open circuit voltage of a solar cell is 0.58 volts (at 77°F or 25°C). All the PV cells in all solar panels have the same 0.58 V voltage. Because we connect them in series, the ...



Power Maxma , Topcon, N-type 555-575W , Solar Panel Datasheet



Detailed profile including pictures, certification details and manufacturer PDF.

Contact Us

For catalog requests, pricing, or partnerships, please visit:
<https://www.kidsandparents.pl>

