

# 60kWh Distributed Energy Data Center Rack

114KWh ESS



PICC  
QUALITY ASSURANCE

RoHS



MSDS

UN38.3

UK  
CA



## 60kWh Distributed Energy Data Center Rack

---



### Guide to Calculating Power Consumption Costs per Rack in Data Centers

Understanding and managing power consumption is crucial for efficient data center operations. Calculating the power cost per rack can help optimize energy usage, reduce expenses, and improve overall sustainability.

---

### Driving Data Center Efficiency with High-Density Rack PDUs

Discover PDUs and monitoring technology that provide critical functionality for high-density data centers, allowing operators to balance unprecedented power demand with the need to operate efficiently and ...



---

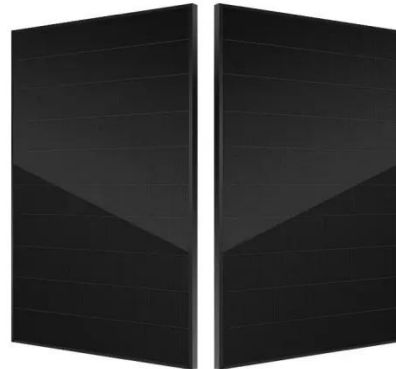
### Data Center Rack Power Distribution Unit PDU Research Report 2025 ...

Key market opportunities in the Data Center Rack PDU Market include the adoption of smart PDUs for real-time energy management, and growing demand for PDUs supporting renewable energy integration

---

## Power Distribution in Data Centers

The impact of these trends on data center electrical design is obvious: the need for flexible, adaptable, electrical power distribution and monitoring systems.



## 2024 United States Data Center Energy Usage Report

The Energy Act of 2020 calls for the U.S. Department of Energy to make available to the public an update to Lawrence Berkeley National Laboratory's prior study entitled United States Data Center Energy Usage ...

---

## Rising Rack Densities: A Driver for High-Density Rack Power

Rising Rack Densities: A Driver for High-Density Rack Power Distribution Units  
The average power density of data center racks continues to rise to support AI and ML, crossing 10kW in 20231.



---

## InfraStruxure PDU 60kW 480V/208V



Designed to increase flexibility and agility of data center power distribution through a design that does not require a raised floor.

## Data Center Rack Power Costs: A Condensed Analysis , Nlyte

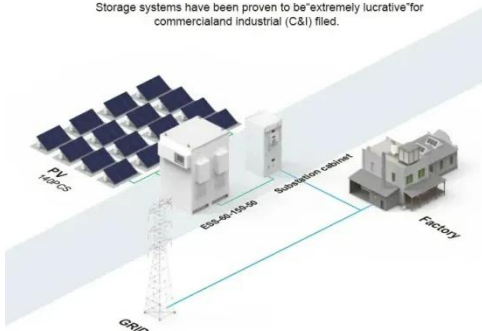
While a standard rack uses 7-10 kW, an AI-capable rack can demand 30 kW to over 100 kW, with an average of 60 kW+ in dedicated AI facilities. This article provides a condensed analysis of these

...



### BASIC APPLICATION

Storage systems have been proven to be "extremely lucrative" for commercial and industrial (C&I) fields.



## 2025 Data Center Power Report

In the US, the rapid deployment of new data center capacity is a strategic priority, but there is a major bottleneck: power availability. Demand for power is only growing, while the electricity grid is aging and new ...

## kW per Rack Explained: Optimize Your Data Center

Learn how kW per rack impacts

colocation pricing, energy efficiency, and performance. Discover best practices to manage power, reduce costs, and future-proof your IT infrastructure.



---

## Contact Us

---

For catalog requests, pricing, or partnerships, please visit:  
<https://www.kidsandparents.pl>

