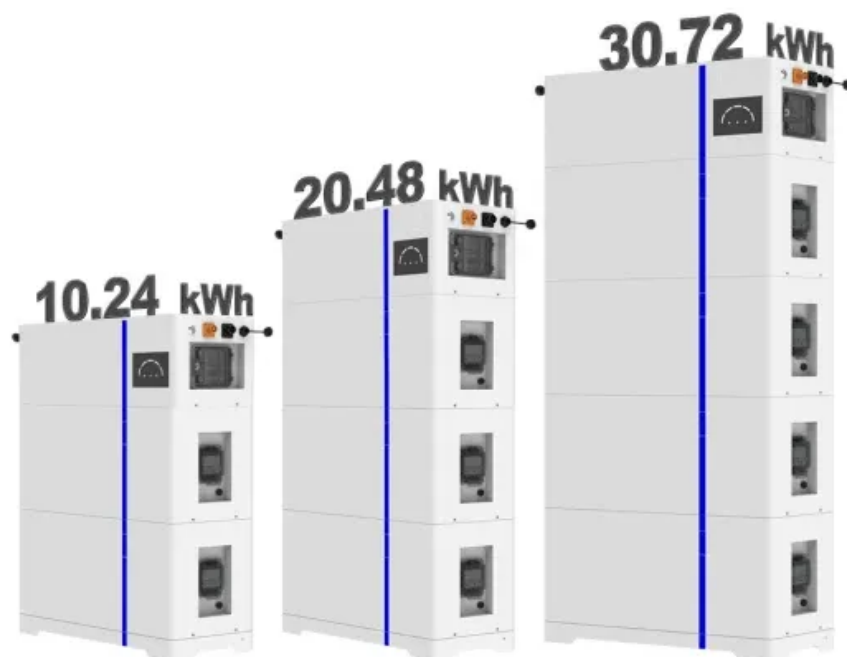


Can Jitu support storage in a locker

ESS



Overview

Products are kept securely enclosed in individual JitLockers that only your store or the intended customer (s) can open, eliminating mix-ups, theft, and lost items. A fully-automated approach that allows you to “translate” the ease of online shopping to your physical storefront. Our package management lockers provide seamless routing and automation for deliveries and pickups of packages. T Lockers are equipped with smart technology promising to keep your items safe and secure. [Learn More PACKAGE DELIVERY DONE SAFE AND EASY.](#) They provide convenient services such as delivery, secure storage and pick-up of parcels or equipment at a central location – for example in form of a company-internal smart parcel. Just-In-Time inventory, or JIT, is a strategy that streamlines a business's inventory and improves efficiency by receiving goods only as they are needed and minimizing inventory costs.

Can Jitu support storage in a locker

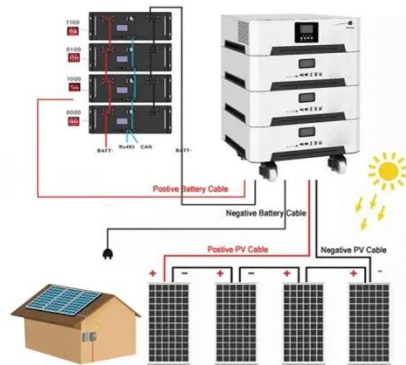


Smart Parcel Locker as Storage & Logistics Solution

The solution can be integrated into various types of lockers and is scalable to your needs. Easy 24/7 package pickup with PIN code through automated email notifications.

Locker Sales - J.I.T Concierge

It all starts with our basic unit - the control unit - which in turn can control up to 20 add-on lockers. Your customized locker configuration can then be designed for indoor use, outdoor use, or both, with or without ...

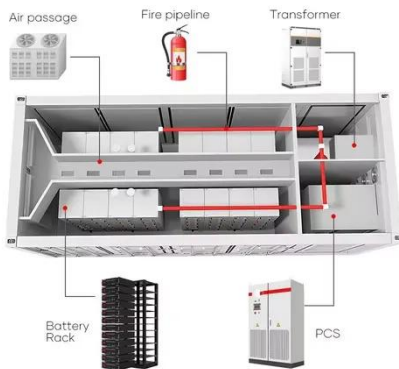


Locker Specs - J.I.T Concierge

Our package management lockers provide seamless routing and automation for deliveries and pickups of packages. In addition, our lockers streamline any package management solution with biometric ...

Just-in-Time (JIT) Production

Just-in-time (JIT) production is an inventory strategy designed to reduce waste, minimise storage requirements and keep goods flowing at the exact moment they're needed.



The Ultimate Guide to Just-in-Time Inventory Management

Sure, just-in-time inventory management can be transformative, but its success hinges on a few key factors. So, before diving in, it's essential to take a step back and evaluate if your business is ready for ...

J& T Express

J& T Express provides express services and international logistics as its core business. At present, the express network covers 13 countries including Indonesia, Vietnam, Malaysia, the Philippines, ...



J.I.T Concierge

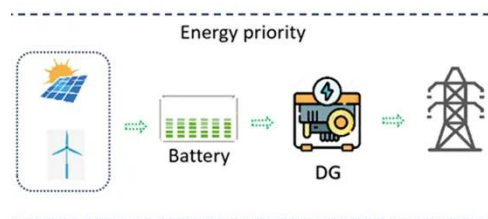
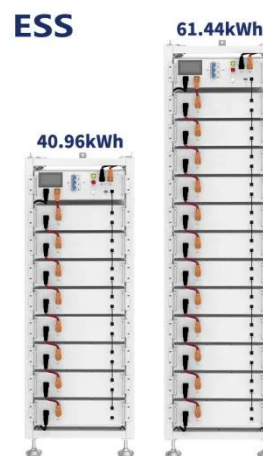
JIT Lockers use secure storage and distribution system with a strong computer and sensor network built-in.



They can detect those products available for signing-out, products in need of repair, and alert ...

Just-In-Time Inventory: Definition, Advantages, Disadvantages

Just-In-Time (JIT) inventory is a strategy companies use to manage inventory with minimal waste. It focuses on receiving raw materials only when they are needed in the production ...



Retail - J.I.T Concierge

Products are kept securely enclosed in individual JitLockers that only your store or the intended customer (s) can open, eliminating mix-ups, theft, and lost items.

Package Nexus

Where No Parcels are Pending Troubleshooting. Package Nexus has pioneered innovative, patent-protected

solutions to address common challenges in the Smart Parcel Locker industry.



Contact Us

For catalog requests, pricing, or partnerships, please visit:
<https://www.kidsandparents.pl>

