

Can the solar water pump inverter work in the morning



Overview

This technology allows the inverter to constantly adjust its electrical operating point to draw the maximum available power from the solar array. Choosing the right solar inverter is crucial to. Solar pump inverters transform sunlight into a reliable energy source for water pumps. It's made specifically for solar water-pumping systems and works great even in remote areas without the electrical grid.

Can the solar water pump inverter work in the morning

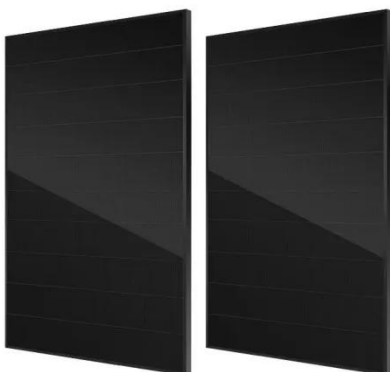


How Can Solar Pump Inverters Ensure Daily Water Supply?

Understanding how solar pump inverters handle low solar input and hybrid operation can help you maintain a steady water supply. Solar energy is not always stable, especially in the early morning, ...

What Kind of Solar Inverter Can Drive a Water Pump?

Learn which solar inverter works best for driving a water pump in different setups. Choosing the right solar inverter is crucial to ensure your water pump operates efficiently. Let's explore the best types of ...



How Solar Water Pump Inverters Work

In conclusion, How Solar Water Pump Inverters Work: A Complete Overview provides a comprehensive understanding of the principles, functions, types, and operation modes of solar water pump inverters.

What Is Solar Pump Inverter? Discover Its Magic Now!

A solar pump inverter is the piece that lets your solar panels power a water pump directly, without waiting for the grid and without needing battery backup for normal daytime pumping.



How Does a Solar Pump Inverter Work? , inverter

Based on inputs from water level sensors, pressure switches, or flow meters, the inverter can intelligently manage pump operation, such as:
Pausing during low water conditions;
Resuming ...

How solar pump inverters work

Can solar pump inverters work during cloudy days or at night? Yes, solar pump inverters can function during cloudy days or at night if the system includes energy storage solutions like batteries.



5 Critical Questions to Understand Solar Pump Inverters and Their



Solar pump inverters enable off-grid water lifting from boreholes, rivers, or shallow wells into overhead tanks or filtration units. These systems can be programmed to prioritize tank filling ...

How Solar Pump Inverters Can Efficiently Run Water Pumps Using Solar

Yes, you can run a water pump on a solar inverter, but it's important to consider several factors to ensure smooth operation. The type of pump, the capacity of the inverter, and the solar ...



Standard 20ft containers



Standard 40ft containers

What Is a Solar Pump Inverter and Why Do You Need One for Your Solar

Solar water pumps are a great way to access water in areas where traditional electricity might not be available. They're especially useful for irrigation or remote water needs. But to make solar power ...



Solar Pump Inverter Guide: How PV Inverters Power Water

Pumps

This technology allows the inverter to constantly adjust its electrical operating point to draw the maximum available power from the solar array. So even on cloudy days or during early mornings, the ...



Contact Us

For catalog requests, pricing, or partnerships, please visit:
<https://www.kidsandparents.pl>

