

China Electric Power Research Institute Energy Storage Container



Overview

This inaugural report provides an authoritative account of NES development across China, covering industry trends, policy advances, technological progress, and market performance in 2024. CEPRI is a comprehensive and multi-disciplinary research institute affiliated to SGCC. It is devoted to R & D, technical service and consulting, testing and inspection, and technical standards, etc. On November 28th, 2016, CEPRI and NCAR. The database compiles information about stationary battery energy storage system (BESS) failure incidents. When energy is needed, it is released from the BESS to power demand to lessen any he integration of demand- and supply-side management. it focuses on research and development to optimize. China's National Energy Administration (NEA) has released the China New Energy Storage Development Report 2025, marking the first official and comprehensive government report dedicated to the country's rapidly advancing new energy storage (NES) sector.

China Electric Power Research Institute Energy Storage Container

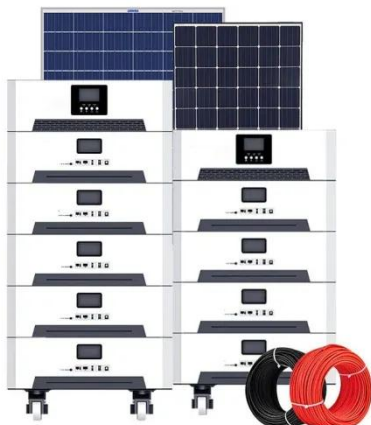


THE CHINA BATTERY ENERGY STORAGE SYSTEM (BESS) ...

Ahead and heading into a new era for new energy, it is expected that China's energy storage capacity and its BESS capacity in particular will grow at a CAGR rate of 44% between 2023 and 2027.

Distributed Energy Storage Project of China Electric Power Research

Project: Distributed Energy Storage Project of China Electric Power Research Institute. Application: Peak shifting. Date: Nov., 2017. Location: Suzhou, Jiangsu. Installed capacity: 3kW/5kW (11 sets)



China National Energy Administration Released Official Report

The report, jointly prepared by the NEA's Department of Energy Conservation and Scientific and Technological Equipment and the China Electric Power Planning and Engineering ...

China Electric Power Research Institute , Tethys Engineering

China Electric Power Research Institute (CEPRI), established in 1951, is a multi-disciplinary and comprehensive research institution in China's electric power sector as well as a subsidiary research ...



BESS Failure Incident Database

BESS: A stationary energy storage system using battery technology. The focus of the database is on lithium ion technologies, but other battery technology failure incidents are included.

EPRI's Energy Storage Roadmap, Vision for 2025

Safe disposal, recycling, and reuse of energy storage system components minimize negative environmental impacts of energy storage projects at end of life. Maintain awareness and strategic ...



CHINA ELECTRIC POWER RESEARCH INSTITUTE

CEPRI is a comprehensive and multi-

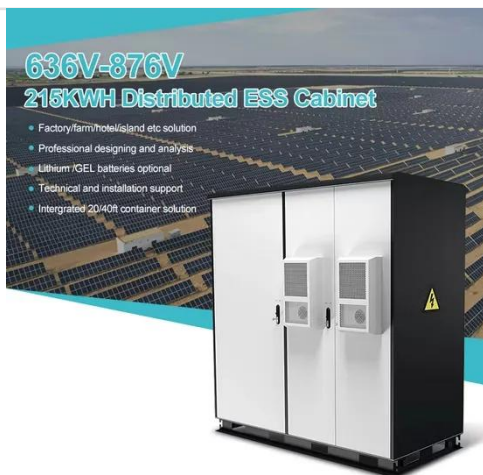


disciplinary research institute affiliated to SGCC. CEPRI leads innovation and excellence in electric power. It is devoted to R & D, technical service and consulting, ...

CHINA'S ACCELERATING GROWTH IN NEW TYPE ENERGY

...

In terms of storage types, the dominant advantage of lithium-ion batteries continues to expand, accounting for 97.4% of the new type storage installation. Other types, such as air compression, and ...



How is the Energy Storage Institute of the China Electric Power

In the landscape of contemporary energy challenges, the Energy Storage Institute under CEPRI emerges as an essential entity. This organization serves as a bridge between theoretical ...

Contact Us

For catalog requests, pricing, or partnerships, please visit:
<https://www.kidsandparents.pl>

