

Communication disconnection of photovoltaic combiner box



Communication disconnection of photovoltaic combiner box



Reasons and judgment of the failure of the combiner box to

Solution: Disconnect all the communication lines of the combiner boxes in the array and connect them one by one. Voltage measurement is required for each connection.

Solar Combiner Box Troubleshooting: 10 Common Problems and ...

As a critical electrical device on the DC side of photovoltaic systems, solar combiner boxes are susceptible to various types of faults, which are often interrelated. Here, we list the 10 ...

Applications



Troubleshooting Solar Combiner Boxes: 6 Common ...

Diagnose and fix solar combiner box faults. A field guide on breaker tripping, blown fuses, terminal overheating, and ground faults for O& M teams.

Disconnecting DC+ and DC

Their existing combiner boxes have a disconnect switch that breaks only the DC+ before it leaves the enclosure. All of the DC- are connected to a multi pole lug only (no means to disconnect).



Seven wiring mistakes in PV combiner boxes and isolators

Stop costly PV combiner box wiring mistakes. See 7 solar isolator wiring errors, DC disconnect best practices, and fixes to cut downtime and fire risk.

Why Your Solar Farm Might Be Ghosting You: Decoding Photovoltaic

Ever had that sinking feeling when your solar farm's data suddenly goes dark? You're not alone. The communication disconnection of photovoltaic combiner boxes has become the solar industry's ...



Solar Combiner Box Common Problems & Troubleshooting

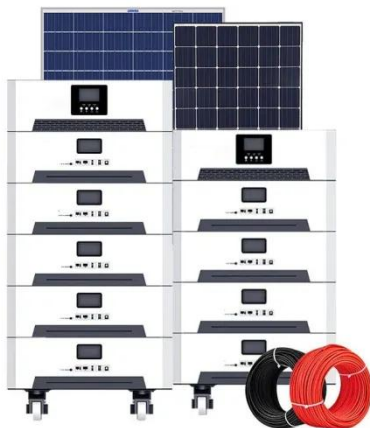
When your solar system underperforms, the real culprit is often the solar



combiner box--leading to energy loss, safety risks, and costly repairs. Learn how to detect and fix it. The solar combiner box, ...

Communication protocol of combiner box in photovoltaic power ...

Ensure the circuit breaker is in the "OFF" or "TRIP" position (or the load isolation switch is in the "OFF" position) to disconnect the combiner box from the PV DC output side.



Analysis and prevention of common failures of combiner boxes

One of the most common problems in combiner boxes is electrical connection failure, which manifests as loose connections, poor contact, or disconnected circuits. These problems lead ...

A Comprehensive Guide to Combiner Boxes in

Photovoltaic Systems

To prevent overcurrent conditions and protect wiring and components, combiner boxes are equipped with fuses or circuit breakers. These devices ensure that the current flowing through the system ...



Contact Us

For catalog requests, pricing, or partnerships, please visit:
<https://www.kidsandparents.pl>

