

D curve circuit breaker factory



Overview

In this 2025 guide, we explain type B vs type C vs type D characteristics, show how a thermal magnetic trip curve works, and provide a practical trip curve chart plus selection tips. Understanding MCB trip curves is the key to eliminating nuisance tripping while maintaining robust protection for your electrical. A: All Circuit Breakers carry a current rating (I_n) which is the amount of current the breaker can carry continuously. Generally, rd th st Have any questions?

Talk with us directly using LiveChat. If you work with LED lighting, switch-mode power supplies (SMPS), motors, or transformers, you've probably wrestled with nuisance trips and confusing curve labels. Let's clear up the first confusion right away: in. Inner Box 12 Items Outer Carton 120 Items Specifications: - 240V AC only - 2A Rated Current - 10kA Breaking Fault Level - D Curve Trip Type - Din Rail Mounted - Perfect for Panel.

D curve circuit breaker factory

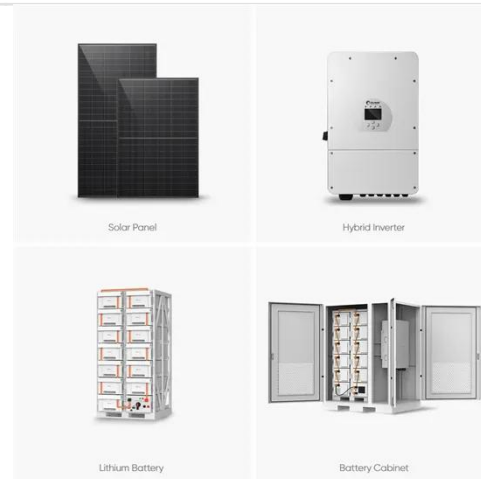


Circuit Breakers

6AMP - 1 Pole 10ka MCB - Circuit Breaker
 - D Curve Inner Box 12 Items Outer Carton 120 Items Specifications: - 240V AC only - 6A Rated Current - 10kA Breaking Fault Level - D Curve Trip Type
 - ...

FMX MCB4, 1, 2 & 3 Pole , FactoryMation, Item Type: D-Curve, ...

Have any questions? Talk with us directly using LiveChat.



C vs D Curve Circuit Breakers, What's the Difference?

Generally, the higher the current spike, the faster the breaker will trip. Below you'll find a list of the the most common curve types and their instantaneous trip ratings.



Circuit Breaker Trip Curves (B,

C, D): 2025 Guide

In this 2025 guide, we explain type B vs type C vs type D characteristics, show how a thermal magnetic trip curve works, and provide a practical trip curve chart plus selection tips.



Ultimate Guide to MCB Trip Curves: Type A, B, C & D

MCB trip curves are bands, not single lines. Typical instantaneous ranges: B 3-5×I_n, C 5-10×I_n, D 10-20×I_n. Two compliant devices can behave differently within these bands. "Type A" usually ...

Circuit Breaker Trip Curves Explained: B, C & D Types

This guide explains how a breaker works, what trip curves are (Type B, C, and D), and how they respond to overloads. It also covers how to choose reliable branded breakers from Simply ...



Guide to MCB Trip Curves: Selecting the Right B, C, or D Curve for

Solve nuisance tripping problems for



good. Our guide helps you diagnose why your breaker trips on startup and shows how to select the correct B, C, or D curve for motors, pumps, and ...

China D Curve Circuit Breaker Manufacturer and Supplier, Factory

China manufacturer and supplier of D Curve Circuit Breaker. Factory direct pricing and high-quality products. Order now!



K Curve vs D Curve Breakers , E-T-A

The D curve breaker from E-T-A has a much smaller tolerance bandwidth and requires a higher level of adjustment during manufacturing and quality control validation.



D-Curve Circuit Breakers , McMaster-Carr

Mount these circuit breakers directly to DIN rail to protect equipment and wiring

in an area of your facility from overloads and short circuits. They meet UL 489 requirements for branch circuit protection and ...



Contact Us

For catalog requests, pricing, or partnerships, please visit:
<https://www.kidsandparents.pl>

