

# Disconnect the solar-powered communication cabinet battery



## Overview

---

To safely disconnect a solar panel battery, first turn off the solar panel system completely. The wiring instructions for all solar controllers are the same: connect the controller to the battery before. Have you ever found yourself needing to disconnect your solar panel battery but weren't quite sure how to do it safely?

It's a common situation for many solar panel owners, whether you're performing maintenance or troubleshooting an issue. Understanding System Components: Familiarize yourself with. During the installation of this product, you will be exposed to wires from the Solar PhotoVoltaic (PV) panel array which are energized with high voltage. The high voltage is present during all daylight hours. I have read and received conflicting. This document is a battery wiring guide and contains an on-site checklist with steps for post-installation verification of a StorEdge system, for the following batteries: LG Chem RESU10H CAUTION For proper battery performance, the LG Chem battery should remain connected to the StorEdge Inverter. Understanding how to manage battery disconnect with solar panel settings is key. It helps make your system work better and stay safe.

## Disconnect the solar-powered communication cabinet battery

---



### How To Disconnect Battery From Solar Panel?

This comprehensive guide outlines the safe process of disconnecting solar panels from batteries. It covers essential safety precautions, necessary tools, and a step-by-step process.

### Connecting SolarEdge Home Battery to SolarEdge Inverter, v 1.1

Here you can find information on how to connect the SolarEdge Home Battery ("the battery") to a SolarEdge inverter and configure it using SetApp after the commissioning.



### How to Disconnect Battery from Solar Panel: A Step-by-Step Safety ...

Learn how to safely disconnect your solar panel battery with our comprehensive guide. We outline essential safety precautions, necessary tools, and a step-by-step process to prevent ...

## Emergency Power System

In addition to the PV Array, the Battery also provides dangerous power to the Apollo PVT Cabinet. Disconnect the Battery after the PV Array is de-energized.



## Properly disconnecting solar from batteries : r/Victron

Disconnect the battery cables, first by the negative to the shunt. Next positive. Do remind, these are sensitive batteries and can cause serious harm if handles incorrectly. Make sure cables end cannot ...

## StorEdge(TM) Wiring Guide & On Site Checklist for North America

CAUTION For proper battery performance, the LG Chem battery should remain connected to the StorEdge Inverter and in charging mode. Extended battery disconnection may result in deep ...



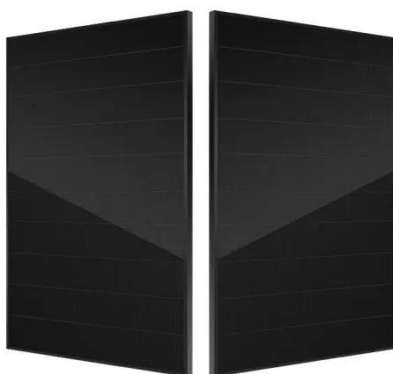
## Disconnect Solar Before Checking Battery Levels?



Should I pull one of the wires, or install a switch and cut the solar feed before checking the batteries water level? Sticking my face over those cells as I take off the caps, with current going to them, just ...

## BATTERY ESTOP & SOLAR DISCONNECT

This is an example of using an E-stop button (or other switch) that can shut off the battery system. This replaces the AC disconnect requirement as it shuts the battery off by opening a DC circuit (thus ...



## How to Safely Disconnect Battery from Solar Panels

Ensure optimal performance for your solar setup with our expert guide on battery disconnect with solar panel settings tailored for efficiency and safety.

## How to Disconnect Battery from Inverter

To disconnect a normal inverter you simply need to switch it off. Then unhook

the negative wire (black) from the battery followed by the positive wire (red) from the battery. Here's the step-by-step process ...



---

## Contact Us

For catalog requests, pricing, or partnerships, please visit:  
<https://www.kidsandparents.pl>

