

Do photovoltaic panels dissipate heat well in summer and winter



Overview

So, while the duration of access to sunlight is greater in summers, the operating temperature is ideal in winters. When the drop in efficiency caused by an increase in temperature during summers is accounted for, the net output ends up being pretty much the same. The difference between photovoltaic solar energy and solar thermal energy 3. How does. Even in warmer climates, solar sales reps would have to explain that with fewer hours of sunshine in the winter, solar performance drops, in some cases, more than you would expect. For panels facing the equator, increasing their tilt can.

Do photovoltaic panels dissipate heat well in summer and winter



Solar Panel Performance: Winter vs Summer (Guide 2023)

In the winter, solar panels can perform better on colder, sunnier days. On the other hand, in the summer, solar panels may be subject to efficiency losses because of high temperatures. While ...

Solar Panel Efficiency vs. Temperature (2026) , 8MSolar

One of the most significant yet often misunderstood factors is temperature. In this guide, we'll explore the relationship between solar panel efficiency and temperature, diving into the science, ...



Solar Panel Output Winter Vs Summer

Extremely high temperatures harm your solar panel whereas during cold weather solar panels cool down which increases their longevity and lifespan. And to prove this theory, you can see ...

Do solar panels get hot in summer? Understanding the impact.

By the end, you'll know how hot solar panels, including portable ones can get in summer and winter. You'll also know what this means for their performance. We've discovered that as solar ...

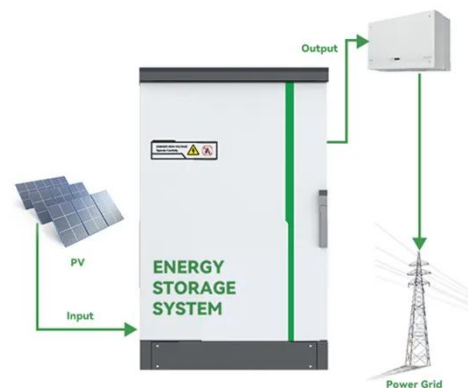


Do Solar Panels Really Work Better in Summer?

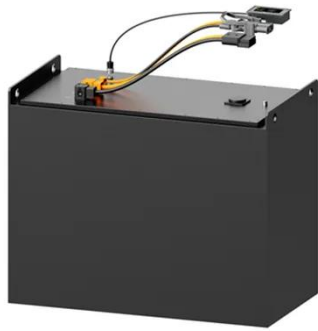
Contrary to popular belief, photovoltaic solar panels do not need the full gamut of solar radiation (including heat) in order to work -- just sunlight is enough. But Isn't there Less Ambient Light During ...

Solar Performance in Winter, Spring, and Fall Compared to Summer

At a 60° angle, the production fall-off in summer is so great that winter, spring, and fall all produce more energy than summer. The production difference ranges from 4%-20% depending on ...



Solar Panel Output: Summer vs Winter Production



During summer, the sun climbs high in the sky, striking panels more directly and maximizing energy capture. In winter, the sun stays lower on the horizon, causing sunlight to spread ...

Do solar panels produce more energy when it's hotter?

For instance, in summer, PR can drop due to heat buildup, even if total production is high. In winter, PR may rise thanks to thermal stability, despite shorter days.



Solar Panel Output Winter vs. Summer

Winter months generally result in lower solar panel output due to reduced sunlight intensity, shorter days, and potential cloud cover. Summer months offer increased sunlight intensity, longer days, and ...

Seasonal Solar FAQ: Output in Winter, Monsoon, and Summer

To ensure optimal summer performance, proper ventilation around the panels

helps dissipate heat. Regular cleaning also prevents dust and pollen buildup, which can obstruct sunlight ...



Contact Us

For catalog requests, pricing, or partnerships, please visit:
<https://www.kidsandparents.pl>

