

Does the wind tower itself not need electricity



Overview

Wind turbines require a significant amount of energy to operate, unlike other electricity plants that use their own electricity. This electricity flows into the grid, not into machinery at the turbine site. Associate Professor of Engineering Systems and Atmospheric Chemistry, Engineering Systems Division and Department of Earth, Atmospheric and Planetary Sciences, Massachusetts Institute of Technology. Wind energy is produced by the movement of air (wind) and converted into electricity.

Does the wind tower itself not need electricity



Do Wind Turbines Need Electricity To Run?

Wind turbines can stop spinning for several reasons, primarily due to insufficient or excessive wind speeds. Most wind turbines require a sustained wind speed of at least 9 MPH to ...

How Does Wind Energy Work: Complete Guide To Wind Power 2025

Real-world efficiency data shows that modern wind turbines can convert 35-45% of the wind's kinetic energy into electricity under optimal conditions.



How Wind Turbines Really Work: The Hidden Secrets

A wind turbine simply converts the kinetic energy of the wind into mechanical energy, and that is converted into electrical energy. We can feel the energy of the wind on our hand.

Putting Wind to Work

Wind energy is produced with wind turbines --tall, tubular towers with blades rotating at the top. When the wind turns the blades, the blades turn a generator and create electricity.



Wind power , Description, Renewable Energy, Uses, Disadvantages

Modern commercial wind turbines produce electricity by using rotational energy to drive an electrical generator. They are made up of one or more blades attached to a rotor and an ...

Wind energy frequently asked questions (FAQ) , EWEA

A wind turbine is a machine that transforms the kinetic energy of the wind into mechanical or electrical energy. Wind turbines consist of a foundation, a tower, a nacelle and a rotor. The foundation ...



How Do Wind Turbines Work?

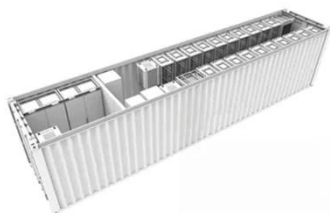
Wind turbines work on a simple

principle: instead of using electricity to make wind--like a fan--wind turbines use wind to make electricity. Wind turns the propeller-like blades of a turbine around a rotor, ...



Wind Energy Myths: What the Science Actually Says

The claim that wind turbines are energy-negative contradicts decades of engineering data. From a thermodynamic perspective, wind energy is among the most efficient electricity generation ...



Consumption of Electricity by Wind Turbines [AWEO]

There doesn't have to be, if engineers all share an assumption that wind turbines don't use a significant amount of power compared to their output and thus it is not worth noting, much less metering.

Contact Us

For catalog requests, pricing, or partnerships, please visit:

<https://www.kidsandparents.pl>

