

Double-glass solar panel structure



Overview

Glass-glass PV modules, also known as double glass solar panels, are photovoltaic modules encapsulated with tempered glass on both the front and back sides. Compared to traditional glass-backsheet modules, they offer greater durability and environmental resistance. Originally double-glass solar panels were heavy and expensive, allowing the lighter polymer backing panels to gain most of the. While dual-glass offers advantages in harsh conditions and extended operational life, conventional panels often provide better value for standard residential installations and moderate climates. When environmental conditions are challenging and long-term reliability is paramount, dual-glass solar. Glass-glass module structures (Glass Glass or Double Glass) is a technology that uses a glass layer on the back of the modules instead of the traditional polymer backsheet.

Double-glass solar panel structure



What are Double Glass Solar Panels?

What is the Double Glass Photovoltaic Solar Panel? Glass-glass module structures (Dual Glass or Double Glass) is a technology that uses a ...

What are double-glass solar panels? , NenPower

Double-glass solar panels represent a transformative advancement in the realm of solar energy collection. At their core, these panels are designed to improve efficiency and longevity, ...

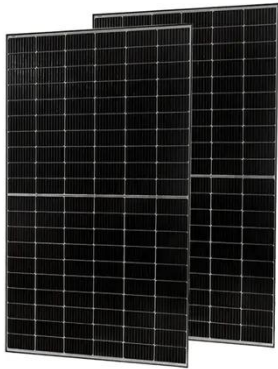
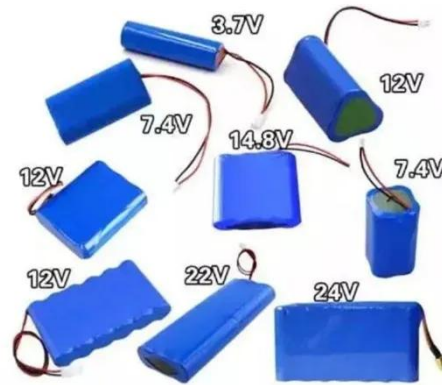


How Double Glass Solar Panels Work -- In One Simple Flow (2025)

At the core of double glass solar panels are several key components. The primary hardware includes two tempered glass layers--one on the front and one on the back--that encase ...

2025 Complete Guide to Glass-Glass Solar Panels: The Top Choice ...

Compared to traditional glass-backsheet modules, they offer greater durability and environmental resistance. The dual-glass structure provides enhanced protection for solar cells ...



Double the strengths, double the benefits

Traditional solar panels typically feature a glass front and a polymer backsheet. In contrast, double glass modules replace the polymer layer with another glass sheet, creating a robust ...

Glass-Glass Solar Panel Technology

Double-glazed modules are characterized by increased reliability, especially for large-scale photovoltaic projects. They include better resistance to higher temperatures, humidity and UV conditions, and ...



Why Dual-Glass Is Not the Same as Bifacial: A Guide to Structural

An explanation of the structural differences between dual-glass and bifacial solar modules, the mechanism behind rear-side power generation, and suitable application scenarios, ...



What is the Double Glass (Dual Glass) Photovoltaic Solar Panel?

What is the Double Glass Photovoltaic Solar Panel? Glass-glass module structures (Dual Glass or Double Glass) is a technology that uses a glass layer on the back of the modules instead of ...



What are Double Glass Solar Panels?

Double-glass solar modules are made up of two layers of tempered glass that cover both sides of the solar panel. As snow accumulates on a typical solar panel or people stomp on it (during ...

2025 Guide to Dual-Glass Solar Modules: When Premium Panels ...

Dual-glass solar modules replace the conventional polymer backsheet with a second layer of tempered glass, creating a symmetric laminate structure. This fundamental design change affects ...



Contact Us

For catalog requests, pricing, or partnerships, please visit:
<https://www.kidsandparents.pl>

