

Electricity towers equipped with communication base stations



Overview

Cell towers, also commonly referred to as cell sites or base transceiver stations, are crucial components of modern telecommunication systems. The physical structure holds necessary equipment for the transmission and reception of radio signals for a specific "cell" or area, hence the. Connecting communities and enabling communication relies heavily on telecom infrastructure. Many of these sites operate far from conventional grids, making traditional. A transmission tower (also electricity pylon, hydro tower, or pylon) is a tall structure, usually a lattice or tubular tower made of steel, that is used to support an overhead power line. It usually connects the device to other networks or devices through a dedicated high bandwidth wire of fiber optic connection. Now that we have a solid.

Electricity towers equipped with communication base stations



What is Telecommunication Base Station , China Hop

Most base stations still do not require specialized tower construction, they can be built directly on existing rooftops. Usually, when you see a row of vertically inclined plate-like objects on the roof, it is ...

How Cell Towers Work to Keep Your Networks Connected - NI

Cell towers, also commonly referred to as cell sites or base transceiver stations, are crucial components of modern telecommunication systems. The physical structure holds necessary ...

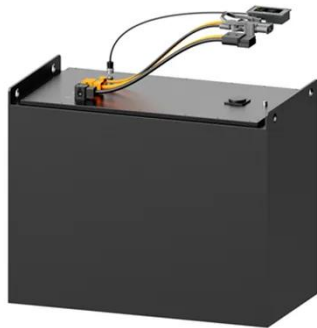


How Do Telecommunication Towers Work? A Comprehensive Guide

Telecommunication towers, often called cell towers or cellular base stations, are robust steel structures engineered to transmit and receive radio frequency (RF) signals, enabling wireless ...

Empowering telecommunication towers employing improved war ...

In the field of telecommunication towers, specifically focusing on Base Transceiver Station (BTS) units, this research presents a revolutionary power supply system that is characterized ...



Telecom Towers and Remote Base Stations

Discover comprehensive insights into powering telecom towers and remote base stations with off-grid solar and energy storage solutions. Explore LiFePO4 batteries, system design, and ...

Base Stations and Cell Towers: The Pillars of Mobile Connectivity

Cell towers are the physical structures that support antennas and other equipment for one or more base stations. These towers can vary in height and design depending on their location ...

Lithium battery parameters

Product capacity: 100Ah

Product size: 135*197*35mm

Product weight: 1.82kg

Product voltage: 3.2V

internal resistance: within 0.5



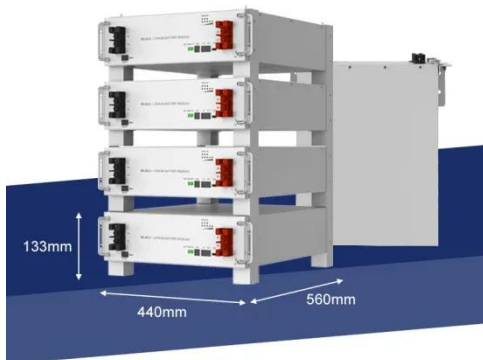
Transmission tower

Electrode line towers are used in some HVDC schemes to carry the ...



Transmission tower

Electrode line towers are used in some HVDC schemes to carry the power line from the converter station to the grounding electrode. They are similar to structures used for lines with voltages of 10-30 ...



Electrical Transmission Tower: Types, Design & Parts

The other names of transmission towers are power transmission towers, power towers, and electricity pylons. The transmission towers carry high-voltage transmission line to transport power from the ...

What Is A Base Station?

A base station, also known as a cell site or cell tower, is used for wireless

communication. It is a fixed location equipped with antennas and other equipment that receives and ...



Base Stations

The present-day tele-space is incomplete without the base stations as these constitute an important part of the modern-day scheme of wireless communications. They are referred to as cell ...

Contact Us

For catalog requests, pricing, or partnerships, please visit:
<https://www.kidsandparents.pl>

