

# Gravity-type closed solar system



## Overview

---

The Earth is considered a closed system because it exchanges a significant amount of energy with its surroundings, primarily through solar radiation, but exchanges very little matter due to its gravitational hold and location in space. This distinction has profound implications for resource management, pollution control, and understanding long-term. This is a list of most likely gravitationally rounded objects (GRO) of the Solar System, which are objects that have a rounded, ellipsoidal shape due to their own gravity (but are not necessarily in hydrostatic equilibrium). Apart from the Sun itself, these objects qualify as planets according to. Systems can be classified as open, closed, or isolated. Open systems allow energy and mass to pass across the system boundary. The ocean is an. The Earth operates as a complex and interconnected system. 6 billion years ago when a dense region of a molecular cloud collapsed, creating the Sun and a protoplanetary disc.

## Gravity-type closed solar system

---



### List of gravitationally rounded objects of the Solar System

This is a list of most likely gravitationally rounded objects (GRO) of the Solar System, which are objects that have a rounded, ellipsoidal shape due to their own gravity (but are not necessarily in hydrostatic equilibrium). Apart from the Sun itself, these objects qualify as planets according to common geophysical definitions of that term. The radii of these objects range over three orders of magnitude, from planetary-mass objects like dwarf planets and some moons to the planets and the Sun. This list does not include small Solar System bodies

---

### Earth as a Closed system

There are 3 types of reservoirs in the lithospheric cycle: igneous, metamorphic and sedimentary rocks. Various processes, such as burial and melting, volcanism, or erosion move this material from one ...



### Is the earth a closed or open system? - The Institute for ...



The Earth is best understood as a closed system, receiving significant energy input from the sun but experiencing negligible exchange of matter with its surrounding environment.

---

## Is the Earth a Closed System? A Scientific Explanation

For practical purposes, Earth is largely considered a closed system regarding matter. The total amount of material on our planet remains relatively constant, confined within its atmosphere and surface by ...



---

## List of gravitationally rounded objects of the Solar System

This is a list of most likely gravitationally rounded objects (GRO) of the Solar System, which are objects that have a rounded, ellipsoidal shape due to their own gravity (but are not necessarily in hydrostatic ...

---

## The Earth is an open and closed system

At a basic level, how might the climate

system be affected if the concentration of gases making up the atmosphere and ozone layer are changed? Is that system likely to remain unchanged?



---

## Solar System

The Solar System remains in a relatively stable, slowly evolving state by following isolated, gravitationally bound orbits around the Sun. [38] Although the Solar System has been fairly stable for ...



---

### 2.3.2: Types of Systems

Earth in turn emits radiation back out to space across the system boundary. Hence, energy passes across Earth's system boundary, but not mass, making it a closed system. The interface between ...

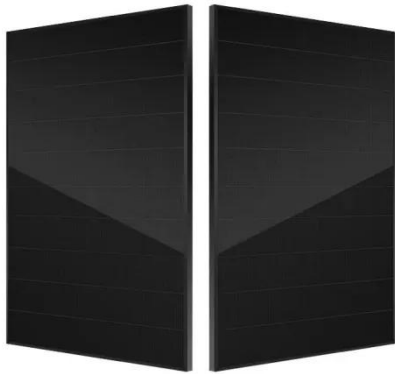


---

## An Objective Classification Scheme for Solar-System Bodies Based ...

We introduce succinct and objective definitions of the various classes of

objects in the solar system. Unlike the formal definitions adopted by the International Astronomical Union in 2006, group ...



## Why Is The Earth A Closed System?

The Earth is considered a closed system because it exchanges a significant amount of energy with its surroundings, primarily through solar radiation, but exchanges very little matter due to ...



Deye Official Store

10 years warranty

## Earth System , Definition & Types



Learn whether Earth is an open or closed system and see examples of these systems. What Type of System Is Earth? What does it mean that Earth is a closed system? Within the atmosphere,

## Contact Us

For catalog requests, pricing, or partnerships, please visit:  
<https://www.kidsandparents.pl>

