

How big is a photovoltaic panel



How big is a photovoltaic panel



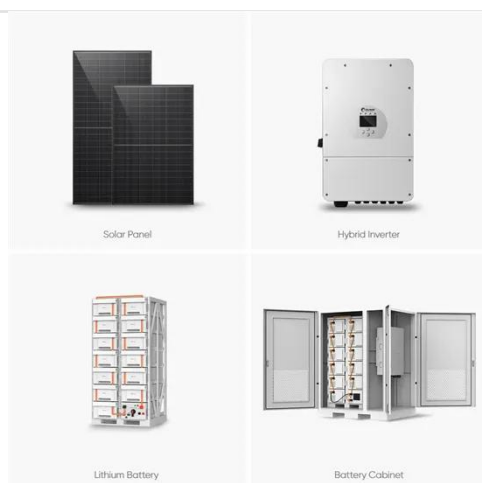
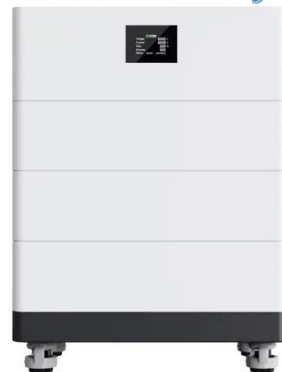
Solar Panel Size: 2026 Detailed Guide

In this article, we will discuss all the important aspects of solar panel size. This guide will help you select the right solar panel size through detailed calculations.

How Big is a Solar Panel? A Guide to Solar Panel Dimensions

For residential solar panels, the panels measure an average of 65 inches (5.4 feet) by 39 inches (3.25 feet), covering an area of 17.25 square feet. This measurement may vary slightly ...

High Voltage Solar Battery



Detailed Guide to Solar Panel Size & Dimensions

Choosing the proper system is not only about the solar panel dimensions. You should also consider wattage, number of cells, layout possibilities, and energy consumption. Also, your ...

Solar Panel Size And Weight: A Comprehensive Guide

Still, most 60-cell solar panels have a size of 39" X 66" and most 72-cell solar panels have sizes of around 39" X 77". However, panels with cell counts of 96, 120, and 144 may have different ...



standard solar photovoltaic panel sizes explained

The standard residential solar photovoltaic panel size you'll see most often is based on a 60-cell configuration, typically measuring about 67 inches long by 40 inches wide. This size offers the ...

What is the Size of a Solar Panel? Key Insights and Facts

Solar panels come in various sizes, typically measured in square feet or meters. The most common residential solar panels are around 65 inches by 39 inches, translating to approximately ...



Solar Panel Size & Dimensions Guide 2025 , Complete Specs

What is the standard size of a solar panel? The most common residential solar panel measures approximately 65?

× 39" × 1.5" (5.4 feet by 3.25 feet) and produces 350-450 watts.



Standard Solar Panel Sizes And Wattages (100W-500W Dimensions)

The goal here is to get to the average solar panel size by wattage. You can find typical dimensions of 100W, 150W, 170W, 200W, 200W, 220W, 300W, 350W, 400W, and 500W solar panels summarized ...



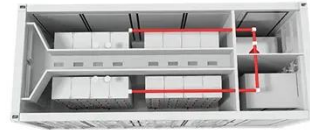
How Big Are Solar Panels? Here's Their Typical Size and Weight

Individual solar panels come in a lot of different shapes and sizes, but generally speaking, they're about 3 feet by 5 feet, or about 15 square feet per panel, according to Pamela Frank, vice



Solar Panel Size And Weight: A Comprehensive Guide

When considering residential solar panels, typical configurations consist of 60 cells measuring approximately 3.25 feet by 5.5 feet. These panels cover an area of 17.62 square feet and weigh



What Are the Common Solar Panel Sizes?

Still, most 60-cell solar panels have a size of 39" X 66" and most 72-cell solar panels have sizes of around 39" X 77". However, panels with cell counts of 96, 120, and 144 may have different ...

Contact Us

For catalog requests, pricing, or partnerships, please visit:
<https://www.kidsandparents.pl>

