

How does the wind blow when generating wind energy



Overview

Wind turbines use blades to collect the wind's kinetic energy. Wind flows over the blades creating lift (similar to the effect on airplane wings), which causes the blades to turn. The blades are connected to a drive shaft that turns an electric generator, which produces (generates). Wind turbines work on a simple principle: instead of using electricity to make wind—like a fan—wind turbines use wind to make electricity. The inner workings of a wind turbine consist of.

How does the wind blow when generating wind energy



How Wind Power Works

In the case of a wind-electric turbine, the turbine blades are designed to capture the kinetic energy in wind. The rest is nearly identical to a hydroelectric setup: When the turbine blades capture wind ...

How is electricity generated using wind?

It's a fairly simple process: When the wind blows, the turbine's blades spin which captures energy. This energy is then sent through a gearbox to a generator, which converts it into electricity for the grid, ...



Electricity generation from wind

Wind turbines use blades to collect the wind's kinetic energy. Wind flows over the blades creating lift (similar to the effect on airplane wings), which causes the blades to turn.

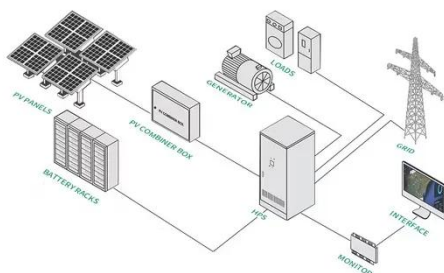
How do wind turbines work?

On This Website On Other Sites News Articles Books Statistics and Market Reports Technical Reports and Journal Articles Photographs Videos Wind with Miller: A great introduction to wind energy from the Danish Wind Industry Association. This one's for younger readers. See more on explainthatstuff psu



How Wind Turbines Work , EARTH 104: Energy, ...

The workings of a wind turbine are much different, except that instead of using a fossil fuel heat to boil water and generate steam, the wind is used to directly ...



Wind Turbines 101: Understanding How They Generate Energy

When the wind blows and spins the turbine blades, the process of turning wind energy into electrical energy starts. As the blades revolve, they rotate the rotor, which spins the generator's ...

How Wind Turbines Work , EARTH 104: Energy, Environment, and ...

The workings of a wind turbine are much

different, except that instead of using a fossil fuel heat to boil water and generate steam, the wind is used to directly spin the turbine blades to get the generator ...



How do wind turbines work?

When wind blows past a plane's wings, it moves them upward with a force we call lift; when it blows past a turbine's blades, it spins them around instead. The wind loses some of its ...

What Is a Wind Turbine and How Does It Generate Electricity?

When wind passes over the rotor blades of a turbine, it creates lift (similar to an airplane wing), causing the blades to spin. This mechanical motion is then transferred to a generator housed ...



How does wind energy work?

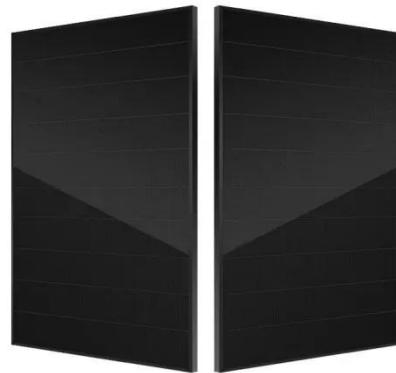
Wind is created when the Sun warms air in our atmosphere. The air is heated more in places with more sun. When air

is heated, it rises. Cold air rushes in to replace it, making wind.



How Do Wind Turbines Work?

How Do Wind Turbines Work? Wind turbines work on a simple principle: instead of using electricity to make wind--like a fan--wind turbines use wind to make electricity. Wind turns the propeller-like ...



Contact Us

For catalog requests, pricing, or partnerships, please visit:
<https://www.kidsandparents.pl>

