

How many branch voltages does an inverter have



Overview

Home energy systems may use 24, 36, or 48 V DC, whereas inverters in photovoltaic solar panels may have 200 to 400 V inputs. Some inverters reach hundreds of thousands of volts in high-voltage direct current transmission systems. What voltage is a 12V inverter?

Inverters come in various configurations, each designed for specific power systems. Common rated input voltages include 12V, 24V, and 48V. A 12V inverter is commonly. How many volts does an inverter use?

What is the rated input voltage of an inverter?

What is the start voltage of an inverter?

What is cut off voltage in inverter?

How do you check the voltage on an inverter?

What is the best voltage for an inverter?

Is 12v or 24v better for an inverter?

What is. In this case, the two 120 VAC Hot Legs L1 and L2 are being delivered voltage from a single 120 VAC inverter and this voltage is in phase on both the Hot Legs L1 and L2 of the panel. Fig 3 shows two 15 A Branch Circuits feeding two 15 A receptacles that have been wired as Multi-wire Branch Circuits. Examples include: 12 V DC, for smaller consumer and commercial inverters that typically run from a rechargeable 12 V lead acid battery or automotive electrical outlet. [3] 24, 36, and 48 V DC, which are common standards for home. Inverters have a DC input, a specific frequency, and AC voltage level—depending on their designed load. The below table gives you the number of.

How many branch voltages does an inverter have



Understanding inverter voltage

In the realm of power electronics, the inverter voltage is a critical parameter that dictates its performance, compatibility, and safety. Understanding the intricacies of inverter voltage is ...

How many branch voltages does an inverter have , EQACC SOLAR

What voltage is a 12V inverter? Inverters come in various configurations, each designed for specific power systems. Common rated input voltages include 12V, 24V, and 48V. The choice depends on ...



120 / 240 VAC SINGLE SPLIT PHASE & MULTI-WIRE BRANCH

...

15 A Branch Circuits feeding two 15 A receptacles that have been wired as Multi-wire Branch Circuits. Each Branch Circuit is delivering 15 A and the voltages / currents in the two branches are in phase.

Power inverter

24, 36, and 48 V DC, which are common standards for home energy systems. 200 to 400 V DC, when power is from photovoltaic solar panels. 300 to 800 V DC, when power is from electric vehicle battery ...

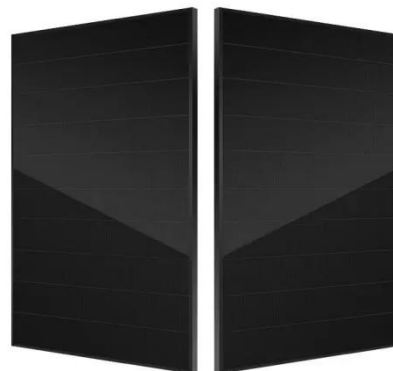


Inverter Basics , inverter

While most inverters available in the market are either 12 or 24 volts, it's worth noting that a higher voltage system is likely to offer greater efficiency. The 48 volt inverter, although ...

Inverter Specifications and Data Sheet

This value indicates to which utility voltages the inverter can connect. For inverters designed for residential use, the output voltage is 120 V or 240 V at 60 Hz for North America.



Lecture 23: Three-Phase Inverters

One might think that to realize a balanced 3-phase inverter could require as many as twelve devices to synthesize

the desired output patterns. However, most 3-phase loads are connected in wye or delta, ...



How Many Voltages Does an Inverter Have? A Complete Guide to ...

Understanding inverter voltage specifications is critical for optimizing energy systems across industries. This guide explores common voltage ranges, their applications, and how to choose the right ...



Power inverter

Overview
Input and output
Batteries
Applications
Circuit description
Size
History
See also

A typical power inverter device or circuit requires a stable DC power source capable of supplying enough current for the intended power demands of the system. The input voltage depends on the design and purpose of the inverter. Examples include: o 12 V DC, for smaller consumer and commercial inverters that typically run from a rechargeable 12 V lead acid battery or automotive electrical

outlet.

What is the maximum number of IQ 7 microinverters I can put in a ...

The maximum number of microinverters you can put in a string branch depends on the voltage ratings of the panels on that branch and the model of your microinverters. The below table gives you the ...

DETAILS AND PACKAGING



- 1 USER MANUAL PDF
- 2 RJ45 Cable For RS485/CAN
- 3 Battery in Parallel Cables
- 4 RJ45 TO USB Monitor Cable
- 5 M8 Terminal*4



Power Inverters: The Need-to-Know Essentials

Inverters have a DC input, a specific frequency, and AC voltage level- depending on their designed load. Inverters use a stable DC power source as an input. Common input values range ...

Contact Us

For catalog requests, pricing, or partnerships, please visit:
<https://www.kidsandparents.pl>

