

How many meters can a wind turbine blade reach



Overview

Modern onshore wind turbines typically have blades ranging between 40 and 70 meters in length. To put that in perspective, a single blade can be as long as a commercial jet's wingspan!. Turbines with longer blades can reach up to 107 meters, typically found in offshore wind farms. On average, the rotor diameter tends to be around half the height of the tower. Offshore wind turbines typically. How long are modern wind turbine blades, and what incredible advancements are pushing their sizes to astonishing new heights?

Discover the future of wind power! Modern wind turbine blades can amaze you with their size, ranging from 84 meters for onshore models to over 107 meters for offshore. A modern onshore turbine now swings fiberglass blades averaging 70–85 m, while the latest offshore prototypes stretch past 115 m. Unicomposite, an ISO-certified pultrusion specialist, supplies the spar caps and stiffeners that let those mega-structures stay light, stiff, and reliable — giving. For example, turbines with blades averaging 50 to 80 meters can significantly boost energy yield compared to shorter blades. Blade length must balance structural integrity with aerodynamic efficiency.

How many meters can a wind turbine blade reach



How Long Are Wind Turbine Blades? Factors & Size Explained

The length of wind turbine blades varies considerably, depending on whether they are intended for onshore or offshore installations and their power capacity. Modern onshore wind ...

What Length Are Wind Turbine Blades

The ideal blade length is influenced by local wind speeds, turbine height, and specific site conditions; typically, blades today reach around 100-135 meters in height.



European Warehouse



7-15 days delivery

ONE-STOP SOLUTION

65kWh 30kW

130kWh 30kW

130kWh 60kW

How Long Are Wind Turbine Blades: Size Specifications Guide

A: While there is no universal standard size, most commercial wind turbines have blade lengths that vary based on intended use-onshore models typically range from 40 to 60 meters, while ...

How Long Are Wind Turbine Blades? Sizes, Materials & Trends

By 2000, 1.5 MW machines carried 40 m blades. Today, the 15 MW V236 spins a 115.5 m blade, and public roadmaps show prototypes nudging 120 m. Every decade has doubled output by ...



How Is The Length Of A Wind Turbine Blades Determined

Turbines with longer blades can reach up to 107 meters, typically found in offshore wind farms. Onshore turbines usually produce less energy. Modern blades average 50-70 meters in ...

How Long Is a Blade on a Wind Turbine?

The question of how long is a blade on a wind turbine is central to understanding modern wind energy; blades today range from around 40 meters (131 feet) to over 100 meters (328 feet) in ...



How Long Are the Blades on a Wind Turbine: Mind-Blowing Facts

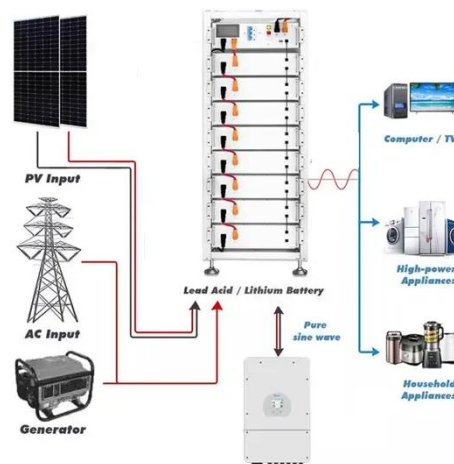
Modern onshore wind turbines typically



have blades ranging between 40 and 70 meters in length. Offshore turbines, often built at a grander scale, can exceed 80 meters per blade. To put that in ...

Wind Turbine Blade Size: How Big Are They and Why?

According to The United States Department of Energy, most modern land-based wind turbines have blades of over 170 feet (52 meters). This means that their total rotor diameter is longer ...



Home Energy Storage (Stackble system)



- 
High Efficiency
- 
Easy installation
- 
Safe and Reliable
- 
Perfect Compatibility

Product Introduction

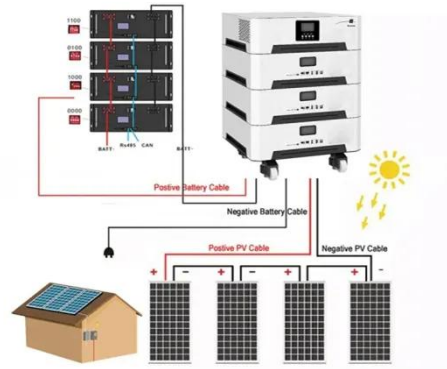
-  Scalable from 10kWh to 50 kWh
-  Self-Consumption Optimization
-  Integrated with inverter to avoid the compatibility problem
-  LFP battery, safest and long cycle life
-  Stackable design, effortless installation
-  Capable of High-Powered Emergency-Backup and Off-Grid Function

How Long Is a Wind Turbine Blade? The Shocking Size of Modern Wind

The maximum length of a wind turbine blade currently stands at around 107 meters, but future designs could potentially reach up to 200 meters, considerably enhancing power generation ...

How Long Are Wind Turbine Blades? Explore Impressive Dimensions

Initially, wind turbine blades averaged around 20 meters, but modern turbines boast blades that can exceed 80 meters, dramatically transforming energy production capabilities.



Contact Us

For catalog requests, pricing, or partnerships, please visit:
<https://www.kidsandparents.pl>

