

How many panels are there at most in a photovoltaic panel



Overview

Residential solar panels typically contain 60 or 72 photovoltaic (PV) cells, though some smaller panels may have as few as 48 cells. More cells generally mean higher power. Location Impact is Massive: The same home using 1,000 kWh monthly could need just 16 panels in sunny Arizona but 22 panels in Massachusetts due to solar production ratios varying from 1. There are typically between 60 to 72 solar cells in a standard solar panel, 2. The configuration affects the panel's efficiency and output, 4. Understanding cell count is. How much do solar panels weigh?

Normally, full sized residential solar panels weigh somewhere around 40 pounds (18 kilograms). Commercial PV panels tend to be heavier because of their extra length, bringing the weight up to 50 pounds and even more.

How many panels are there at most in a photovoltaic panel



How Many Pv Cells In A Solar Panel?

The number of PV cells in a solar panel can vary depending on factors such as size, capacity, and efficiency. PV cells work together to generate direct current (DC) electricity, which is ...

How Many Solar Panels Do I Need? 2025 Calculator , SolarTech

Most homeowners need between 15-25 solar panels to power their entire home, but this number varies significantly based on your energy usage, location, and roof characteristics.



how many photovoltaic cells in a solar panel >> Basengreen Energy

In conclusion, the number of photovoltaic cells in a solar panel can range from around 60 to 72, and their size, arrangement, and quality all play a significant role in determining the overall performance of the ...

Average dimensions of photovoltaic panels

Generally speaking, the length of residential solar panels is between 65 inches (1.65 meters) and 79 inches (2 meters). Their width is between 39 and 41 inches (around 1 meter). The ...



Solar Panel Calculator

Calculate how many solar panels you need based on your electricity consumption and location.

How Many PV Cells in a Solar Panel Explained

Most standard panels contain between 60 and 72 PV cells arranged according to the panel's intended use and desired power output. The quality of these cells, along with advances in ...



How Many Solar Cells Are in a Typical Panel?

Typical commercial solar panels can have anywhere from 72 to 144 cells, with 72-cell and 96-cell configurations

Parallel (Parallel operation up to 6 unit (only with battery connected))



AC input wires



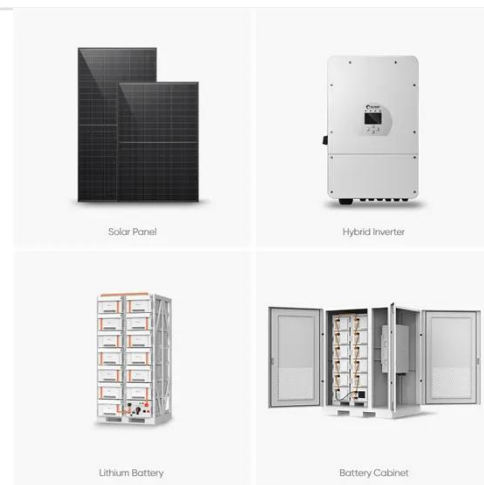
AC output wires



being the most common. These panels are designed to generate higher ...

How many panels are there in a solar panel? , NenPower

Typically, a standard solar panel incorporates 60 to 72 solar cells, depending on its dimensions and intended application. This battery of cells works in unison, facilitating the conversion ...



Standard Solar Panel Sizes And Wattages (100W-500W Dimensions)

To bridge that gap of very useful knowledge needed, we have compared and averaged the sizes of 100-watt to 500-watt solar panels available on the market. The goal here is to get to the average solar ...

How Many Solar Cells in a Solar Panel: A Complete Guide

For commercial applications, solar panels usually have 72 solar cells, arranged in a 6×12 grid. These panels are larger and generate more power, typically producing 350-500 watts per ...



Contact Us

For catalog requests, pricing, or partnerships, please visit:
<https://www.kidsandparents.pl>

