

How much area of photovoltaic panels is needed for 15mw photovoltaic



How much area of photovoltaic panels is needed for 15mw photovol



How much area is needed for solar panel installation

Discover how much area is needed for a solar panel installation and how to calculate roof space for solar in this comprehensive guide for homeowners in the U.S.

How many square meters of space is required per kw solar panel?

The area required for each kilowatt (kW) solar panel system is approximately 5 to 10 square meters, depending on the panel efficiency and wattage. 1. The efficiency of the solar panels ...

Test certification
CE FC U



How Much Area Is Required To Set Up A Solar Power Plant?

Solar panel efficiency refers to the percentage of sunlight that the panels can convert into electricity. Higher efficiency panels can generate more electricity per unit area, potentially reducing ...



Photovoltaics

Photovoltaics - Calculate Power and Surface Area Calculator for the power per area or area per power of a photovoltaic system and of solar modules. You can enter the size of the modules and click from ...

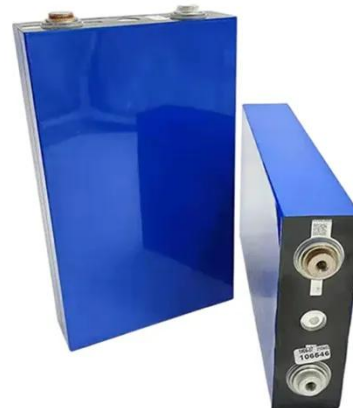


How to calculate the surface area required by solar panels

What factors affect the surface area required for solar panels? The required surface area depends on the number of panels, their wattage, and physical dimensions.

Area Required for Solar PV Power Plants

You might have heard that solar power plants require significant amounts of land to generate power. How much area indeed is required for solar power plants? Investing in MW scale ...



Photovoltaic System: Exactly How Much Space is Needed

The number of modules is 17-21 elements by choosing polycrystalline photovoltaic panels, while by installing

Monocrystalline Modules approximately 13-17 modules are needed. How ...



A Guide on Calculating Area Required for Solar Panel Installation

1000 = total area x 1000 x 0.18 Total area = 1000/180 = 5.56m² For installing all the solar panels in one row, approximately 1m x 5.56m of space is essential as each solar panel is 1m x ...



Solar Power Roof Area Calculator , Roof Space Needed for a ...

The core formula behind the calculator is based on the relationship: Roof Area (m²) = (Power Needed (kW) / (Panel Efficiency x Solar Irradiance)) x 1000. Each component plays a critical ...

Total Area Required for Solar Panel Installation ...

Calculate the total area needed for your solar panel installation quickly and accurately with our easy-to-use solar panel area calculator.



Contact Us

For catalog requests, pricing, or partnerships, please visit:
<https://www.kidsandparents.pl>

