

How much current does a 6v6w solar panel have



Overview

For a 6V 6W solar panel, the current produced under optimal conditions is about 1 Ampere (since $\text{Power} = 6\text{W}$ when $\text{Voltage} = 6\text{V}$). Thus, in perfect setup and conditions, one might gain 6 watts of electricity for each hour of peak sunlight exposure. If you've ever wondered "How much current does a 6V6W photovoltaic panel produce?"

", you're not alone. This common question sits at the intersection of voltage, wattage, and real-world solar applications. Theoretical output, peak sunlight hours, location, and system efficiency are critical components in determining the energy yield. Voltage is. Hello, I am using an ebay bought $V_{oc} = 6\text{V}$ $I_{sc} \sim 280\text{mA}$ solar panel. I am powering an Arduino with 16x2 LCD Screen (backlight off) through MT3608 booster to get 5V (as under load and full sun pv voltage drops to 4.

How much current does a 6v6w solar panel have

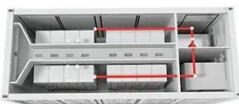


Solar Basics: Voltage, Amperage & Wattage , The Solar Addict

Learn how voltage, amperage, and wattage work in solar panels with our clear and easy-to-understand guide.

How much electricity can a 6v6w solar panel generate?

For a 6V 6W solar panel, the current produced under optimal conditions is about 1 Ampere (since $\text{Power} = 6\text{W}$ when $\text{Voltage} = 6\text{V}$). Thus, in perfect setup and conditions, one might gain 6 watts of electricity ...



Understanding Solar Panel Voltage and Current ...

Decode solar panels specifications to safely connect your panels to power station or charge controller. This quick guide unlocks full solar potential.

How to Use 6V Solar Panel:

Examples, Pinouts, and Specs

Learn how to use the 6V Solar Panel with detailed documentation, including pinouts, usage guides, and example projects. Perfect for students, hobbyists, and developers integrating the 6V Solar Panel into their ...



Help understanding my 6V PV panel current output

Use your multimeter and a variable resistor (e.g. a 250 Ohm to 1K potentiometer) to measure the I/V curve of the solar panel for a number of resistance values and plot the curve. It should look something like ...

How Much Current Does a 6W Solar Panel Produce? A Practical Guide

A 6W solar panel's current output ranges from 0.3A to 1.2A depending on voltage configuration. While not suitable for heavy loads, these panels excel in portable charging, sensor networks, and emergency power ...



Solar Panel Amps Calculator

To calculate solar panel amperage,



identify their rated power output in watts, which serves as a comparison of their electricity-generating potential. The panel's operating voltage is key to calculating current ...

See how much current a single crystal 6v solar panel draws

A crystal 6V solar panel under optimal conditions can produce about 1 to 3 amps of current. However, this value fluctuates based on light intensity, angle of sunlight, and temperature.



How much current does a 6v 6w solar panel draw

Current is calculated by dividing the power of the panel (in watts) by the voltage (in volts). For a 6W panel at 6V, the current will be: $\text{Current (A)} = \text{Power (W)} / \text{Voltage (V)} = 6\text{W} / 6\text{V} = 1\text{A}$ In this case, the solar ...

Understanding the Current of a 6V6W Photovoltaic Panel: A Practical

This common question sits at the intersection of voltage, wattage, and real-world solar applications. Let's break it down using Ohm's Law: Current (Amps) = Power (Watts) ÷ Voltage (Volts). For a 6W panel operating at ...



Contact Us

For catalog requests, pricing, or partnerships, please visit:
<https://www.kidsandparents.pl>

