

How much does it cost to rent a hillside to install photovoltaic panels



Overview

Due to its vast land area and generous sun exposure, the average rental cost is positioned around \$500 to \$1,000 per acre. The booming industry in such regions leads to competitive pricing structures that favor long-term leases. The most commonly-asked question by landowners regarding solar farms is, How much can I lease my land for?

The short answer is, “it depends,” but solar lease rates (also called “rents”) typically range from about \$450 to \$2,500 per acre, per year—though can go much, much higher. Location plays a crucial role; states with strong solar incentives or a suitable climate may command higher rents. Solar farm lease rates per acre in the United States are the starting point. Lease rates are variable depending on a wide range of factors, and different states will have different average land lease rates, so it's important to have some context when estimating a solar farm rental rate. With a solar lease, you can reduce upfront costs and pay monthly as a replacement for your electric bill.

How much does it cost to rent a hillside to install photovoltaic pane



Cost to Install Solar Panels

Average lease costs are between \$50-\$250 per month based on the size and overall production of your system. In many instances, solar providers offer free system monitoring, maintenance, repairs and ...

How Much Does It Cost to Rent a Photovoltaic Panel Installation?

The average cost to rent a photovoltaic panel installation typically ranges from \$50 to \$200 monthly, but hold your solar-powered horses - there's more to this story than a simple price tag.



Leasing Solar Panels: How Much Does a Solar Lease Cost in 2026?

With a solar lease, you can reduce upfront costs and pay monthly as a replacement for your electric bill. Let's dive into how leasing works, its benefits and drawbacks, and how to get ...

Solar Land Lease and Development FAQs , U.S. Light Energy

What are the lease rates? How much are you offering per acre? Lease rates are unique to each project. Our lease rates are based on system size rather than acreage.



Lease Rates for Solar Farms: How Valuable Is My Land?

The short answer is, "it depends," but solar lease rates (also called "rents") typically range from about \$450 to \$2,500 per acre, per year--though can go much, much higher. This article looks at the ...

How much does it cost to rent land to install solar energy

Analysis suggests that average rental prices for land designated for solar installations typically range from \$200 to \$2,000 per acre annually, depending largely on geographically defined ...



The Average Solar Farm Lease Rates Per Acre In 2024

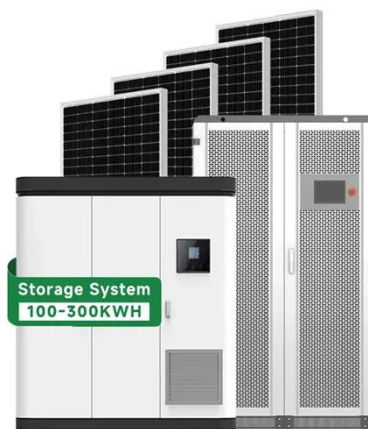
To find the best cost for your situation, compare solar farm rates. Your solar



farm land lease rate per acre should be fair. Start searching for land after you know what elements could affect ...

Solar Installed System Cost Analysis , Solar Market Research

NLR analyzes the total costs associated with installing photovoltaic (PV) systems for residential rooftop, commercial rooftop, and utility-scale ground-mount systems.



 LFP 280Ah C&I

Solar Farm Land Lease Rates , YSG Solar

Location is one of the most important factors in determining a solar land lease rate, and so it's no surprise that average rental rates for solar PV vary greatly depending on the state.

How Much Do Solar Panels Cost? (2026) , ConsumerAffairs®

Solar installation costs vary significantly by location due to differences in labor rates, local incentives, permitting fees and electricity prices. The national average is around \$20,000. On



The Average Solar Farm Lease Rates Per Acre In 2024

5-Star Rated Pros Expert Customer Support Flexible Scheduling

Contact Us

For catalog requests, pricing, or partnerships, please visit:
<https://www.kidsandparents.pl>

