

How much wind power generation is appropriate



How much wind power generation is appropriate

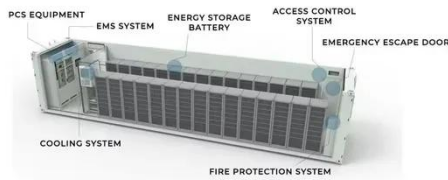


How Much Wind Is Needed for a Wind Turbine?

Wind Turbine Power Generation To optimize the efficiency of wind turbine power generation, anemometers measure wind speed and direction. Wind turbines kick into action at ...

Wind Energy Factsheet

Wind Resources and Potential Approximately 2% of solar energy striking Earth's surface is converted into kinetic energy in wind.¹ Wind turbines convert this kinetic energy to electricity without ...



Wind energy generation vs. installed capacity, 2024

Wind energy generation, measured in gigawatt-hours (GWh) versus cumulative installed wind energy capacity, measured in gigawatts (GW). Data includes energy from both onshore and offshore wind ...

Wind energy resource assessment and wind turbine selection ...

The objective of this study is to perform an analysis to determine the most suitable type of wind turbine that can be installed at a specific location for electricity generation, using annual



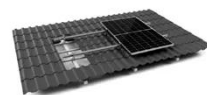
Electricity generation from wind



Wind electricity generation has increased significantly. Wind electricity generation has grown significantly in the past 30 years. Advances in wind-energy technology have decreased the ...

How Much Wind Does a Turbine Need? 5 Facts ...

Discover how much wind a turbine needs to work efficiently. Learn about cut-in speeds, tower height, wind maps, and site analysis in this guide.



TILE ROOF SOLAR MOUNTING SYATEM



STANDING SEAM ROOF SYATEM



ADJUSTABLE TILT FLAT ROOF SYATEM



TRIANGLE FLAT ROOF SYATEM

How Much Energy Does a Wind Turbine Produce?

Wind power accounts for about 8% of global electricity generation, and countries around the globe continue to

develop and scale up their wind power generation capacity. You might be curious, how ...



Review of wind generation within adequacy calculations and ...

The integration of renewable energy sources, including wind power, in the adequacy assessment of electricity generation capacity becomes increasingly ...



How Much Energy Does a Wind Turbine Generate

How Much Energy Does a Wind Turbine Generate depends on several key variables, including turbine size, wind speed, air density, and the turbine's efficiency rate. From my experience ...



Basics of Wind Energy Production

100 MW total nameplate capacity x

8,760 hours x 35% capacity factor =
306,600 MWh expected annual
generation Power Curve Power
production from a wind turbine is a
function of wind speed. The ...



Contact Us

For catalog requests, pricing, or partnerships, please visit:
<https://www.kidsandparents.pl>

