

How to calculate the weight of a monocrystalline photovoltaic panel



Overview

The weight of the solar panel affects the installation and load-bearing design, so it must be calculated accurately. The calculation formula is as follows: Solar panel weight (kg) = area (m²) x specified weight (kg/m²) The weight is based on the solar panel size, material. Monocrystalline silicon solar panel: A monocrystalline silicon solar panel with a wattage of 300W weighs about 19 - 24 kg. Larger and more powerful solar panels can weigh much more. Even then, these factors can balance one another out. This might change a little depending on the brand.

How to calculate the weight of a monocrystalline photovoltaic pane

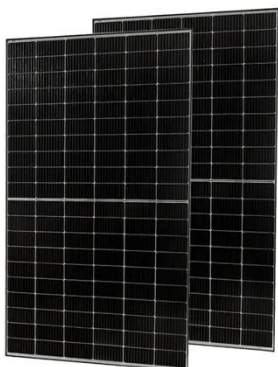


How to calculate the weight of materials used in photovoltaic panels

To calculate the structural load of solar panels on a roof, several factors must be considered, including the number and weight of the panels, the weight of the mounting system and components, and any ...

Solar Panel Weight Guide

Learn the average weight stats for both home and business solar panels, as well as some FAQs about solar panels' weight.



How to Calculate Photovoltaic Panel and Bracket Weight Like a Pro

Calculating photovoltaic panels plus bracket weight isn't just about avoiding sore muscles - it's critical for roof safety and system efficiency. Let's crack this nut with real-world examples and even some solar ...

Detailed analysis of solar panel weight and calculation

The solar panel weight depends on a number of factors, including panel size, material, and construction. The most common solar panels are made of silicon, which is why they have a ...



How Much Does a Solar Panel Weigh? Solar Panel Size, kg/sq.m., W/kg

Knowing the size and weight of individual solar panels will help you estimate the total weight of a solar panel system and determine whether your roof can support it.

PVWatts Calculator

NREL's PVWatts ® Calculator Estimates the energy production of grid-connected photovoltaic (PV) energy systems throughout the world. It allows homeowners, small building owners, installers and ...



How Much Do Solar Panels Weigh? A Complete Guide

Discover how much do solar panels

weigh and the impact on your roof. Explore types, sizes, and installation tips for optimal efficiency.



Solar Panels Size & Weight (Including Commercial Dimensions)

The weight also varies based on the type of material used to make the solar panel, due in part to the manufacturing process. For example, a 365-watt monocrystalline solar panel could weigh

...



How to calculate the weight of photovoltaic panel columns

How to calculate the photovoltaic panel columns weight of .1 lbs (6.4& #177;0.3 kg) 10.33 lbs (.69 kg) Solar Cells. Monocrystalline Silicon Solar Cells. Monocrystalline Silicon Solar Cells. If you want to ...

How Much Does a Solar Panel Weigh? The Weight Explained

Discover the essentials about solar panel weight and streamline your energy transition. Learn exactly how much a solar panel weighs here.



Contact Us

For catalog requests, pricing, or partnerships, please visit:
<https://www.kidsandparents.pl>

