

How to charge the 48v backup battery of the communication base station



How to charge the 48v backup battery of the communication base s



How to charge the 48v lithium iron battery of communication base ...

In this comprehensive guide, we will delve into the specifics of charging a 48V lithium-ion battery, covering everything from the ideal voltage settings to best practices for maintaining and

Can a 48V battery be used in a communication base station?

As a supplier of 48V batteries, I often get asked whether a 48V battery can be used in a communication base station. Well, let's dive right into this topic and find out.



48100R user manual-PYTES 3.5

Charge the LFP battery to more than 90% of its rated capacity for long-term storage(>6months). The battery needs to be recharged every 6 months to more than 90% of the rated capacity.

How to charge the 48V backup battery of a communication base station

When choosing a charger for a 48V lithium-ion battery, ensure it matches the battery's voltage and has a compatible charging profile. Look for features such as overcharge protection, temperature ...



How to charge the 48v communication base station battery

How do I care for a 48V lithium ion battery? To ensure optimal performance and longevity, follow these best practices: use a compatible charger designed for 48V lithium-ion batteries, avoid overcharging ...

48V100Ah Li-ion Battery Installation Guide.cdr

This guide provides guidance on the safe and effective installation and operation rack mounted Li-ion batteries (48V series). It also provides information on how to safely connect multiple batteries in ...



Communication base station lithium battery charging

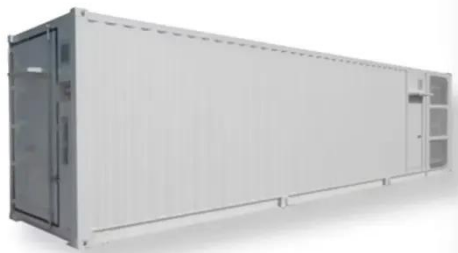


voltage

Communication base stations typically operate on a 48V power system, which is a standard voltage level for telecommunication equipment. Our 48V LiFePO4 batteries are specifically designed to ...

Can a 48v lifepo4 battery be used in a communication ...

In this blog post, I will delve into the technical aspects, advantages, and potential challenges of using a 48V LiFePO4 battery in a communication base station.



Telecom Base Station Backup Power Solution: Design Guide for 48V ...

This guide outlines the design considerations for a 48V 100Ah LiFePO4 battery pack, highlighting its technical advantages, key design elements, and applications in telecom base stations.

How to charge lithium batteries for base station communication ...

To charge a base station lithium battery, you can follow these general guidelines: Use the Manufacturer's Charger: Always use the charger recommended by the manufacturer to ensure



Contact Us

For catalog requests, pricing, or partnerships, please visit:
<https://www.kidsandparents.pl>

