

# Huawei grid-connected inverter voltage change



## Overview

---

Grid voltage is too high >253VAC: increase the voltage for the “Grid connection voltage upper limit”. Connect to the inverter, choose Device monitoring on the home screen, select an inverter, tap Set, and set related parameters. This video helps to understand How to change Volt-VAR and Volt-Watt settings at the Huawei solar inverter. Let's unpack what makes these parameters industry-leading. Wait, no – that last row needs. A Huawei hybrid inverter is a type of inverter that converts solar energy (DC) into grid power (AC) and also supports battery storage for storing excess energy. What do I need before starting?

Which models does this step-by-step guide apply to?

This guide applies to Huawei's widely used hybrid inverters in the PV yield modelling software PVsyst. It outlines how to input key inverter parameters based on datasheet information to correctly simulate the inverter's performance, the surplus energy is used to charge batteries. In 2020, Huawei launched the industry's first string ESS, which uses controllable power electronics technologies to resolve the inconsistency and uncertainty of lithium battery power. Does a solar input voltage is the upper limit of the DC.

## Huawei grid-connected inverter voltage change

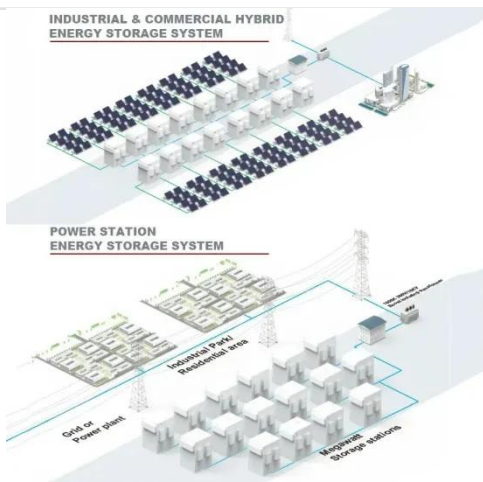


### Huawei photovoltaic grid-connected inverter efficiency

Huawei Digital Power is dedicated to enhancing the safety and stability of renewable integration by combining digital and power electronics technologies, leveraging technical experience, and ...

### Setting Inverter Parameters

Connect to the inverter, choose Device monitoring on the home screen, select an inverter, tap Set, and set related parameters. Mode in which the inverter restarts after the power grid recovers from a fault. ...



### Inverter Connected to the Grid, but Data Is Abnormal

This document provides common troubleshooting cases for Huawei residential Smart PV solution and provides reference for engineers and users to handle common issues.

## Operations Related to the Special User

Set the working mode of the inverter based on the grounding status at DC side and the connection to the power grid. Specifies whether the inverter output has a neutral wire based on the application ...



### Lithium Solar Generator: \$150

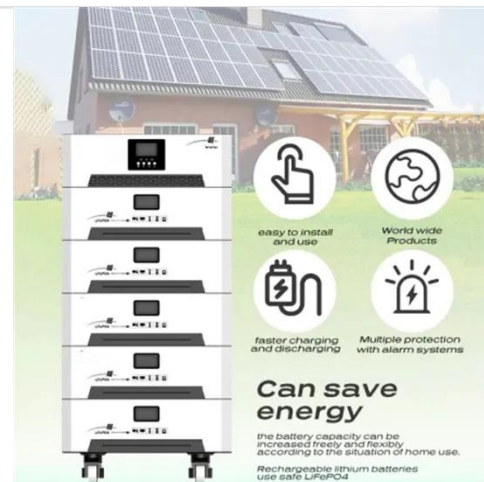


### How to change Volt-VAR and Volt-Watt settings at Huawei Solar ...

It will help to maintain Voltage level of the grid, and This is the solution for high voltage issue of the electricity Grid .more. This video helps to understand How to change Volt-VAR

### Set running parameters for SUN2000L inverter

Set the running parameters with FusionHome APP. Grid voltage is too high >253VAC: increase the voltage for the "Grid connection voltage upper limit". Grid voltage is too low <195.5: decrease the ...



### Huawei Technical Support

Learn how to set up inverter parameters for Huawei devices with step-by-step

instructions and technical support.



## Huawei photovoltaic inverter parameter configuration

As a dedicated platform for photovoltaic (PV) power system monitoring and management, the SmartLogger implements the interface convergence, protocol conversion, data ...



## Huawei Photovoltaic Grid-Connected Inverter Parameters: The ...

As global energy prices fluctuate, Huawei's grid-tied inverters have become the go-to solution for commercial installations, particularly after their Q1 2025 firmware update addressing ...

## How do I configure a Huawei inverter and resolve faults?

Guide for setting up Huawei hybrid inverters and troubleshooting common issues using the FusionSolar app and portal.



---

## Contact Us

---

For catalog requests, pricing, or partnerships, please visit:  
<https://www.kidsandparents.pl>

