

# Insulation test of wind turbine generator



## Overview

---

Insulation testing measures the resistance of the insulation around generator windings to prevent electrical leaks. Using a device like a megohmmeter, you apply a high DC voltage and measure the resistance. The condition of a winding insulation can be established by conducting an Insulation Resistance (IR) test or High Voltage. By regularly performing these five important tests, your wind turbine should run effectively and efficiently for years. com's insulation resistance testers can help. A good part of a wind turbine technician's time is spent checking, lubricating, and inspecting mechanical components. The insulating system and materials used for these machines are basically the same as for conventional generators and must be carefully selected in order to meet very high specific.

## Insulation test of wind turbine generator

---



### SERVICE PROCEDURE

To measure insulation resistance, connect the positive lead of the tester to the winding leads. Connect the negative tester lead to the generator grounding stud bolt. Apply the test potential ...

---

### Generator and Motor Testing for Onshore Wind Turbines

It replicates real-world voltage spikes and detects early insulation breakdown, preventing unexpected wind turbine motor and generator failures, as well as ensuring compliance with insulation ...



---

### Evaluation method of insulation system for wind turbine generator ...

With the rapid increasing of the amount and capacity of wind power generation worldwide, the operation reliability of wind turbine generator (WTG) became more a



## Five important tests to run on wind turbines

Testing the insulation resistance of high-voltage power cables and buses, large motor/generator windings, and transformers is extremely important to ensure the integrity of the ...



## Wind Turbine Insulation Best Practices

Discover best practices for electrical insulation in wind turbines to ensure safety, efficiency, and reliable power generation.



## WIND TURBINE GENERATOR INSPECTION SERVICES

ENGIE Laborelec provides comprehensive inspection services for wind turbine generators, and reliable condition assessment. Even though the generator is critical to wind turbine operation, it is often left ...



## vonRoll\_Broschüren\_Cover\_2020\_02 dd

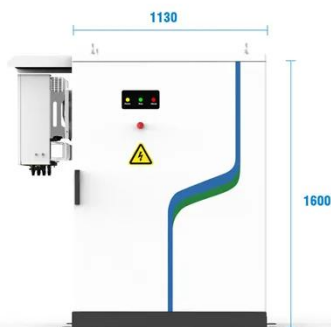
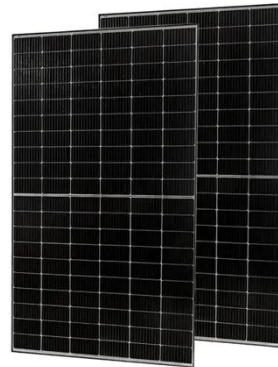
Our materials for slot liners, phase insulation, barrier applications and

closures for low-voltage wind turbine generators are outstanding. We supply them in a wide variety of thicknesses to fit perfectly in ...



## AGN 015 Testing Winding Insulation Systems

The applied test voltage is of a magnitude which is typically three to four times the winding assembly's normal operating level and so will severely test the integrity of the winding's EIS.



-   
PV / DG Application
-   
APP Intelligent Control
-   
Multi-Unit Parallel Expansion
-   
98.8% Max. Efficiency

## Testing generator winding insulation is a wise addition to your

Insulation testing of your generator windings is a data acquisition method that--if completed during regular maintenance cycles--can help you understand the health of your ...

## Insulation Testing for Generators: Ensuring Optimal Performance

Insulation testing helps ensure their windings remain safe and efficient by detecting any degradation that could lead to failures. This guide will walk you through why it matters, how to do it, ...

**LPSB48V400H**  
48V or 51.2V



---

## Contact Us

For catalog requests, pricing, or partnerships, please visit:  
<https://www.kidsandparents.pl>

