

Introduction to three-phase inverter



Introduction to three-phase inverter

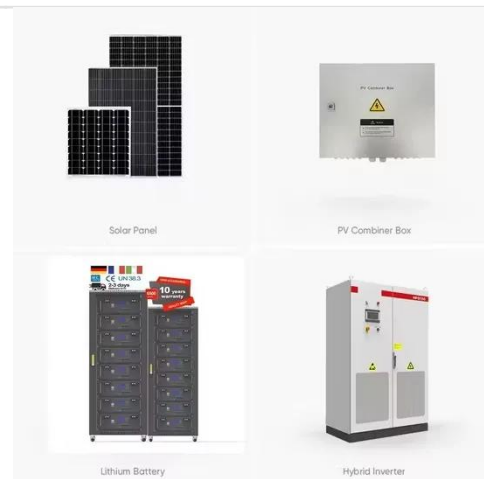


Understanding the Basics of a 3 Phase Inverter

In this guide, we will break down the essential components and functions of a 3 phase inverter, providing you with a clear and concise explanation of how these devices work. Whether ...

Three Phase Inverter : Circuit, Working and Its Applications

Working Principle
Single Phase Inverter
Three Phase Inverter Design/Circuit Diagram
Three Phase Inverter Applications
The circuit diagram of a three-phase inverter is shown below. The main function of this kind of inverter is to change the input of DC to the output of three-phase AC. A basic 3 phase inverter includes 3 single phase inverter switches where each switch can be connected to one of the 3 load terminals. Generally, the three arms of this inverter will be connected to three load terminals. See more on [elprocus mit \[PDF\]](#)



Lecture 23: Three-Phase Inverters - MIT OpenCourseWare

One might think that to realize a balanced 3-phase inverter could require

as many as twelve devices to synthesize the desired output patterns. However, most 3-phase loads are connected in wye or delta, ...



3-Phase Inverter

Here we will discuss about circuit design and working of inverter, types of inverters, advantages, limitations and applications of inverters . A three phase inverter is a device that ...

Lecture 23: Three-Phase Inverters

One might think that to realize a balanced 3-phase inverter could require as many as twelve devices to synthesize the desired output patterns. However, most 3-phase loads are connected in wye or delta, ...



Three-Phase Inverter

At higher power levels it is usual to generate and distribute power using three phases. A three-phase inverter is usually based on the circuit of Figure 10. The three pairs of switches are switched in a ...

Three-Phase Inverters

The primary features and benefits of three-phase inverters over single-phase inverters are highlighted in this section. We will go through numerous three-phase inverter types, their essential parts, and ...



 LFP 48V 100Ah



What is Three Phase Inverter and How Does It Work

This article will help you understand what is three phase inverter, how it works, why it's useful, where it's commonly applied, and what to consider before using one.

How a Three-Phase Inverter Works

Three-phase inverters are fundamental components in the Electric Vehicle (EV) industry. The EV's high-voltage battery supplies DC power, which the inverter converts into the three-phase ...



Three Phase Inverter : Circuit, Working and Its Applications

A three-phase square wave inverter is used in a UPS circuit and a low-cost solid-state frequency charger circuit. Thus,



this is all about an overview of a three-phase inverter, working principle, design ...

What is a Three-Phase Inverter? , inverter

As the name implies, a three-phase inverter is a power conversion device that converts DC power into three-phase AC power. Three-phase AC refers to a power system composed of three ...



Three-Phase Inverter Design , Tutorials on Electronics , Next Electronics

The most common three-phase inverter topology is the Voltage Source Inverter (VSI), where a fixed DC voltage is converted into a variable AC output. The VSI employs six power switches (typically IGBTs ...

Contact Us

For catalog requests, pricing, or partnerships, please visit:
<https://www.kidsandparents.pl>

