

Is it dangerous under the wind turbine blades



Overview

Wind turbine blade coating is not toxic and does not account for large – or any – emissions of BPA or microplastics. When one of the massive turbine blades at Vineyard Wind fell apart last July, an intense although short-lived focus on the numerous chemical components that. We have documented the threats of industrial wind turbines to both soil and water in their pre and post-construction phases, not to mention birds, bats, insects, and humans. But not enough has been said about the serious environmental threat of “blade shedding. This report has not been peer-reviewed or published in any academic journals, so it has not been examined by experts in the field of study, which is common practice in science literature.

Is it dangerous under the wind turbine blades



Wind Energy's Dirty Secret: The Asbestos-Like Threat of 'Nasty Fibres'

Now, the similarities between asbestos and the fibres released from wind turbine blades are raising alarms. Like asbestos, these carbon fibres are chemically non-reactive and difficult to ...

Root Causes and Mechanisms of Failure of Wind Turbine Blades: ...

A review of the root causes and mechanisms of damage and failure to wind turbine blades is presented in this paper. In particular, the mechanisms of leading edge erosion, adhesive joint degradation, ...



Wind Turbine Blade & BESS Contamination

Contamination of waterways, soil profiles and the waste management arising from wind turbine blades containing high levels of BPA is recognized worldwide as a 'ticking time-bomb'.



Claims vs. Facts: Microplastics and BPA in Wind Turbine Blades

Wind turbine blade coating is not toxic and does not account for large - or any - emissions of BPA or microplastics. Claims have been made that wind turbine blades shed dangerous amounts of ...



Wind Turbines & Health: Risks, Noise & Community Impact

Wind turbine blades are subject to extreme environmental conditions, including high wind speeds, rain, ice, and UV exposure. The leading edge of a blade is particularly vulnerable to erosion due to the ...

Toxic Blade Time Bomb

We have documented the threats of industrial wind turbines to both soil and water in their pre and post-construction phases, not to mention birds, bats, insects, and humans. But not enough ...

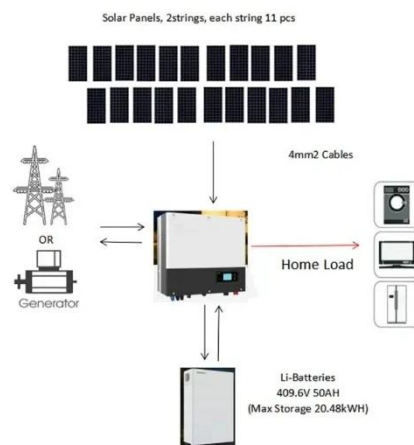


Claims vs. Facts Microplastics and BPA in Wind Turbine Blades

FACT: Wind turbine blades' protective coatings are non-toxic and contain negligible amounts of BPA, and the blades are specifically designed to have high resistance to weathering.

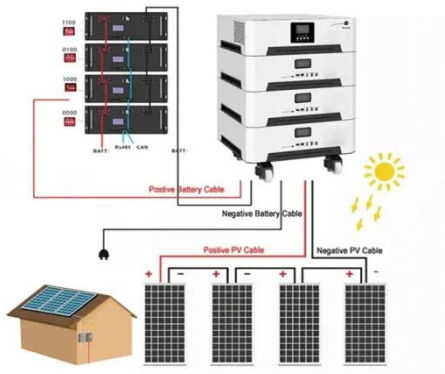
The toxic fallout from wind turbine blades 'should not be

The researchers estimated that current annual amounts of metals shed from blades at operating European offshore wind facilities to be high enough that, when taken up by seaweed and ...



Toxic blade time bomb , Wind Energy News

Given that turbines are placed in



generally high wind locations, and are generating strong wind themselves to the point that they can create drought conditions, these toxic ...

Contact Us

For catalog requests, pricing, or partnerships, please visit:
<https://www.kidsandparents.pl>

