

Is it safe to assemble an outdoor power supply



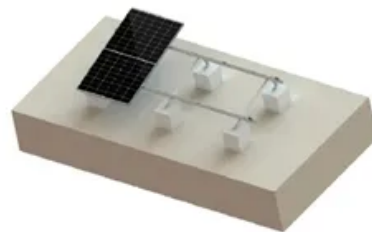
TILE ROOF SOLAR MOUNTING SYATEM



STANDING SEAM ROOF SYATEM



ADJUSTABLE TILT FLAT ROOF SYATEM



TRIANGLE FLAT ROOF SYATEM



Is it safe to assemble an outdoor power supply



Running Electricity to a Shed: Safely Power Your Outdoor Space

Discover how to assess electrical needs, source power legally and safely, and the nitty-gritty of installation--all while adhering to local building codes. Avoid common pitfalls and power up your ...

Ultimate Guide to Outdoor Power Strips: Buyer's Tips

Discover the benefits, features, and safety tips of using outdoor power strips for reliable, safe power in any outdoor setup.



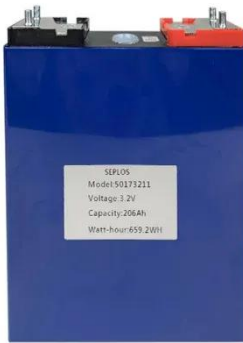
Outdoor Electrical Installations , Safety Tips

Using components not intended for outdoor use can lead to malfunctions, electrical shorts, and potential safety hazards. Therefore, always check the specifications and ratings of your ...



Best Practices for Safe Outdoor Electrical Installations

Whether you're creating a backyard oasis, illuminating your pool area, or upgrading your home and yard security, it's important to follow best practices to ensure safe outdoor electrical ...



What's the Best Way to Run Power Outside? , Mr. Electric

When running power outside, a GFCI-equipped outlet ensures safety, and is required by code in all areas exposed to moisture, like the outdoors. When adding an outdoor outlet, be sure to ...

How to Protect Power Supply Outdoors

In this guide, we'll explore effective strategies and best practices to safeguard your outdoor power supply, ensuring it remains safe, efficient, and dependable regardless of the conditions.



Is It Safe to Install an Outdoor Power Supply at Home? Essential Tips

Thinking about adding an outdoor power

supply to your home but worried about safety? You're not alone. With the rising demand for backyard automation, landscape lighting, and EV charging ...



What's the Best Way to Run Power Outside? , Mr. Electric

Using components not intended for outdoor use can lead to malfunctions, electrical shorts, and potential safety hazards. Therefore, always ...



Outdoor Electrical Safety Tips

Whether you are just headed out to do a little work in the yard or are off to take on more ambitious outdoor projects, following these few tips can help protect you, your home and your family from harm.

The Dos and Don'ts of Outdoor Electrical Installation for a Safe

When it comes to outdoor electrical installation, safety should always be the

top priority. To prevent accidents or potential hazards, it's important to ensure all electrical work is done correctly ...



Connecting an Outdoor Structure to House Power

Connecting an outdoor structure (such as a shed, gazebo, or workshop) to a home's power supply allows electricity to be used outside the primary residence. This includes lighting, power tools, ...

Contact Us

For catalog requests, pricing, or partnerships, please visit:
<https://www.kidsandparents.pl>

