

Jordan nickel-manganese-cobalt batteries nmc



Overview

Lithium nickel manganese cobalt oxides (abbreviated NMC, Li-NMC, LNMC, or NCM) are mixed metal oxides of Li, Ni, Mn, and Co with the general formula $\text{LiNi}_x\text{Mn}_y\text{Co}_{1-x-y}\text{O}_2$. These materials are commonly used in for mobile devices and, acting as the positively charged, commonly called the (though when charging it is actually the). When.

Jordan nickel-manganese-cobalt batteries nmc



The Influence of NMC Composition on Li-ion Cell Performance

Explore how NMC cathode composition--particularly nickel, manganese, and cobalt content--affects lithium-ion battery performance, energy density, and rate capability. Learn why ...

Nickel Manganese Cobalt Battery Market Decade Long Trends, ...

The nickel manganese cobalt (NMC) battery market is poised for significant expansion, with a projected CAGR of 26.0% during the forecast period (2025-2033). This growth is driven by the ...



Nickel-Manganese-Cobalt (NMC) Lithium-ion Batteries

The reductive leaching of manganese from oxidised manganese ores has been investigated. Preliminary mechanical activation of concentrate was used for increasing manganese ...



Lithium Nickel Manganese Cobalt , Mitsubishi Electric

The NMC battery, a combination of Nickel, Manganese, and Cobalt, has been a powerful and suitable lithium-ion system that can be designed for both energy and power cell applications.



Lithium nickel manganese cobalt oxides

Lithium nickel manganese cobalt oxides (abbreviated as Li-NMC, LNMC, NMC, or NCM) are mixed metal oxides of lithium, nickel, manganese and cobalt with the general formula $LiNi_x Mn_y Co_{1-x-y} O_2$.

Lithium Nickel Manganese Cobalt Oxides

In terms of performance, NMC-based batteries offer a strong combination of high energy density (150-220 Wh/kg),

good power capability, and moderate to long cycle life. These attributes ...



TAX FREE 

ENERGY STORAGE SYSTEM

Product Model
 HJ-ESS-215A(100KW/215KWh)
 HJ-ESS-115A(50KW 115KWh)

Dimensions
 1600*1280*2200mm
 1600*1200*2000mm

Rated Battery Capacity
 215KWH/115KWH

Battery Cooling Method
 Air Cooled/Liquid Cooled



Environmental impact assessment of material manufacturing for nickel

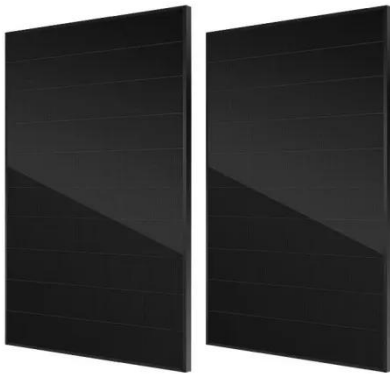
This study presents a novel, multidimensional life cycle assessment (LCA) of NMC battery manufacturing by combining material level analysis via the bill of materials with a comparative ...

NMC Cathode Active Materials for Li-ion Cells , Targray

NMC (Nickel Manganese Cobalt Oxide) is the industry-standard cathode material driving innovation in lithium-ion battery technology. Known for its high energy density, thermal stability, and long cycle life, ...



North America's Potential for an Environmentally Sustainable Nickel



Among the key components of LIBs, the $\text{LiNi}_x\text{Mn}_y\text{Co}_{1-x-y}\text{O}_2$ cathode, which comprises nickel, manganese, and cobalt (NMC) in various stoichiometric ratios, is widely used in EV batteries. ...

NMC elemental composition analysis in battery development

Their unique combination of nickel, manganese, and cobalt allows for fine-tuning battery properties such as energy capacity, stability, and thermal safety. This balance makes NMC cathodes ...



DETAILS AND PACKAGING



- 1 USER MANUAL PDF
- 2 RJ45 Cable For RS485/CAN
- 3 Battery in Parallel Cables
- 4 RJ45 TO USB Monitor Cable
- 5 M8 Terminal*4

Lithium nickel manganese cobalt oxides

Overview Structure Performance Synthesis History Properties Usage

Lithium nickel manganese cobalt oxides (abbreviated NMC, Li-NMC, LNMC, or NCM) are mixed metal oxides of lithium, nickel, manganese and cobalt with the general formula $\text{LiNi}_x\text{Mn}_y\text{Co}_{1-x-y}\text{O}_2$. These materials are commonly used in lithium-ion batteries for mobile devices and electric vehicles, acting as the positively charged electrode, commonly called the cathode (though when

charging it is actually the anode). When
...

Contact Us

For catalog requests, pricing, or partnerships, please visit:
<https://www.kidsandparents.pl>

