

Lithium ion power cell



Overview

Lithium-ion batteries stand out for their high energy density, lightweight design, and long cycle life, making them ideal for modern applications such as smartphones, EVs, and power tools. They charge quickly and are rechargeable up to 1,000–3,000 cycles. However, they come at a cost. A lithium-ion battery or Li-ion battery is a type of rechargeable battery that uses the reversible intercalation of Li^+ ions into electronically conducting solids to store energy. Choosing the right cells means balancing quality, chemistry, size, and supply reliability. But how do they actually work?

And why are they so important for EVs?

Let's break it down.

Lithium ion power cell

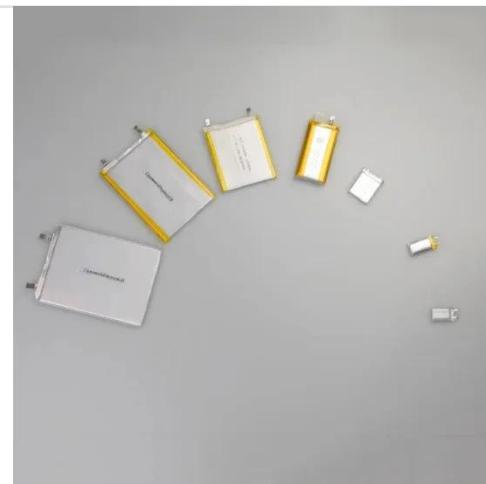


The Science of Lithium-Ion Batteries: How Portable Power Works

Understanding how lithium-ion batteries work reveals why they have revolutionised portable electronics and transportation, and why they continue to be an active field of research. A ...

Lithium Battery Configurations: Series, Parallel, and Beyond

Power cells deliver high current loads over short, intermittent periods, making them ideal for high-rate starter applications or power tools that generate high loads and torque. Energy cells provide ...



Lithium-Ion Battery

What is a lithium-ion battery and how does it work? The lithium-ion (Li-ion) battery is the predominant commercial form of rechargeable battery, widely used in portable electronics and electrified ...

Lithium-Ion Batteries: Types, Safety, Performance & Expert Insights

Discover lithium-ion battery types, cell formats, safety advancements, performance improvements, and expert insights on future innovations in battery technology.



About Lithium-ion Batteries , Battery Council International

There are six main types of lithium-ion batteries, each with distinct characteristics suited to different applications. Known for long cycle life and high power density.

Lithium Ion Battery Cells: All You Need to Know , SolarCtrl

Lithium-ion cells power a broad range of modern electrical systems, from small personal devices to industrial-grade energy storage. Their combination of high energy density, long cycle life, ...

Commercial and Industrial ESS

Air Cooling / Liquid Cooling

- Budget Friendly Solution
- Renewable Energy Integration
- Modular Design for Flexible Expansion



Power versus Energy Cells

Thin separators benefit the design of both energy and power density cells as it

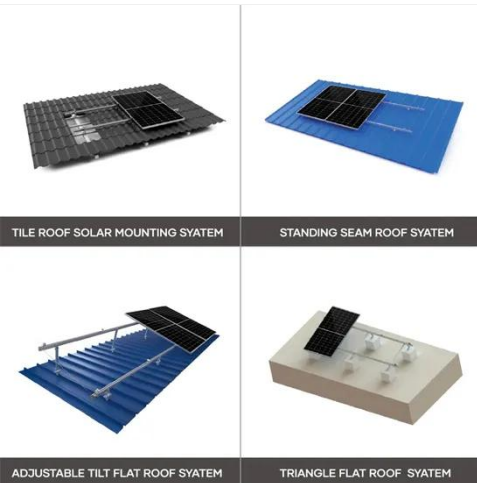
reduces volume and resistance between the active layers. The electrical tag configuration, thickness and ...



Lithium-Ion Battery Cell: How It Works & Its Role in Modern

...

A lithium-ion battery cell is a rechargeable power source that generates energy by moving lithium ions. First developed in the 1970s, lithium-based compounds transformed energy storage, which paves the ...



Lithium-ion battery

Commercial lithium ion cells are now optimized for either high energy density or high power density. There is a trade-off in cell design between power and energy requirements.

How Lithium-ion Batteries Work , Department of Energy

Lithium-ion batteries power the lives of

millions of people each day. From laptops and cell phones to hybrids and electric cars, this technology is growing in popularity due to its light weight, ...



Contact Us

For catalog requests, pricing, or partnerships, please visit:
<https://www.kidsandparents.pl>

