

# MY1 5se wind turbine generator speed



## Overview

---

The maximum speed of the generator is 17. At the mains frequency, the My1. As corrosion protection for the tower MingYang focuses on spray. Product Introduction The MY 1.5 Series Wind Turbine Generator was jointly developed than 50 years of combined experience in electrical and wind turbine Generator. Germanischer Lloyds issuing team verified elementally th second to none. Rotor speed is regulated by a combination of blade pitch angle adjustment an generator/converter torque contr h a rated capacity of 1. The rotor area amounts to PDF | On , Imane Idrissi and others published Modeling and Simulation of the Variable Speed Wind Turbine. .

## MY1 5se wind turbine generator speed

---

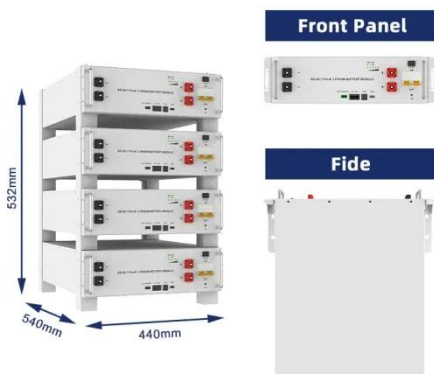


### MingYang My1.5/82

In the generator, Mingyang Smart Energy Group Limited sets to double fed asynchronous. The manufacturer has used one generator for the My1.5/82 - MY1500/82. The maximum speed of the ...

## MY1 5se wind turbine generator speed

Four different generator types, including direct-drive, low-speed synchronous generators, and high-speed, gear-driven induction machines, are presented for five representative wind turbines rated ...



### General Electric - 1.5 MW Series

The rotor on a GE 1.5 MW turbine is designed to operate in an upwind configuration at 10 to 20 revolutions per minute (rpm). Rotor speed is regulated by a combination of blade pitch angle ...

## Guangdong Mingyang MY1.5se

Model: MY1.5se Rated power: 1,500 kW  
 Rotor diameter: 82.6 m No more  
 available Wind class: TC IIa/IIIa Offshore  
 model: no Swept area: 5,359 m<sup>2</sup> Specific  
 area: 3.58 m<sup>2</sup>/kW Number of ...



## Guangdong Mingyang MY1.5se

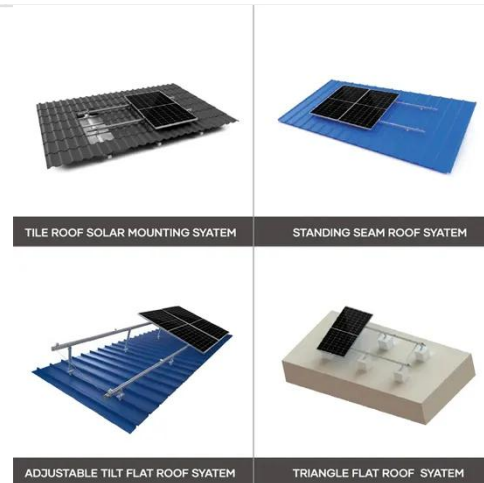
Wind Turbine Generator Low Rpm  
 Wind Turbine Generator Cost Variable Speed  
 Wind Turbine Generators 15Kw Wind  
 Turbine Variable Speed Wind  
 Generators Low Rpm Generator For Wind  
 Turbine Most Efficient Wind  
 Generator AWS Hc 5 1Kw Wind  
 Turbine 15Mw Wind Turbine Wind Power  
 For Homes - Lindy Energy What is the  
 optimum wind speed to generate  
 electricity by a wind turbine? Turbine  
 power versus turbine speed, with the  
 wind speed as a parameter Wind Turbine  
 Technology Trends , Encyclopedia  
 MDPI Free Energy 10KW Vertical Wind  
 Turbine Windmill Generator 10000W 24v  
 Example of multi-megawatt variable  
 speed with full scale frequency 1MW  
 Wind Turbine - Efficient Power  
 Generation System Wind Turbine  
 Capacity Mw at Sherri Branch blog See  
 all wind-turbine-models

## **MingYang My1.5/82 - MY1500/82 - 1,50 MW - Wind turbine**

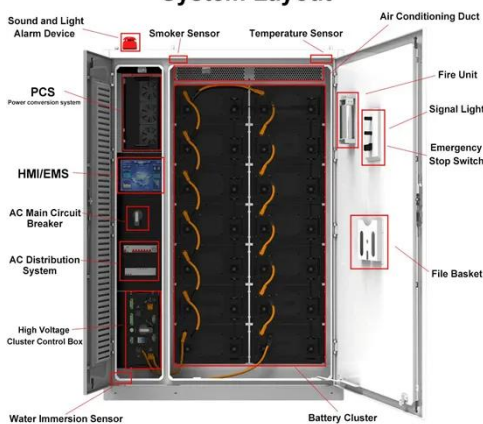
In the generator, Mingyang Smart Energy Group Limited sets to double fed asynchronous. The manufacturer has used one generator for the My1.5/82 - MY1500/82. The maximum speed of the ...

## 1.5se (GE Energy)

Generator Type: DFIG Number: 1  
 Maximum speed: 1440 rd/min Voltage: 575 V  
 Manufacturer: Bosch Rexroth, VEM, Loher



### System Layout

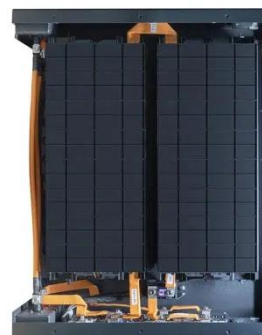


## Manufacturers and turbines

Online access > Manufacturers and turbines > Guangdong Mingyang Manufacturers file (228 manufacturers) Turbines file (2,053 turbines) Power curves file (898 curves)

## MY1 5se wind turbine generator speed

The wind turbine used has a rated generator speed of 1173 rpm. Fig. 13 (a) shows that the generator speed signal output from the generator speed control loop is stable



## Contact Us

---

For catalog requests, pricing, or partnerships, please visit:  
<https://www.kidsandparents.pl>

