

Main functions of wind power generation system



Main functions of wind power generation system



How Does a Wind Generator Work: A Comprehensive Guide to Wind ...

This article explores the inner workings of wind generators, their key components, and the technology behind their operation. Understanding how a wind generator works highlights its importance in the ...

Working Principle of Wind Turbine

Wind Turbine Definition: A wind turbine is defined as a device that converts wind energy into electrical energy using large blades connected to a generator.

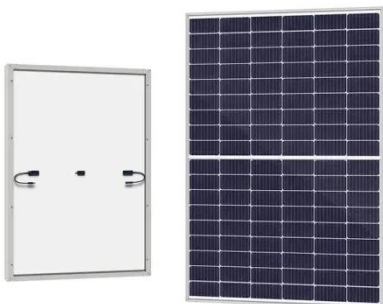
Working Principle of Wind Turbine: The ...

ESS



How Does Wind Energy Work: Complete Guide To Wind Power 2025

Modern wind turbines are marvels of engineering that efficiently capture the kinetic energy of moving air and transform it into usable electrical power through a carefully orchestrated process.



Wind Power Plant: Diagram, Parts, Working & Advantages

As the wind blows, a wind turbine converts the kinetic energy of the wind's motion into mechanical energy by the rotation of the rotor, and this mechanical energy is transmitted by the shaft to the

...

ESS



Product Details



Wind Turbine Parts and Functions

In practical applications, well-designed and maintained wind turbines support reliable power generation, reduce dependency on fossil fuels, and contribute to sustainable energy solutions worldwide.

What Is Wind Power? Complete Guide to Generation, Types

Learn what wind power is, how wind turbines generate electricity, key system types, benefits, and real-world applications in modern renewable energy systems.



How Do Wind Turbines Work

Wind turbine operation and purpose: Wind turbines convert wind into

LPSB48V400H
48V or 51.2V



electricity by propelling turbine blades to rotate, which then powers a generator to produce electricity.

How a Wind Turbine Works

Wind turbines work on a simple principle: instead of using electricity to make wind--like a fan-- wind turbines use wind to make electricity. Wind turns the propeller-like blades of a turbine around a rotor, which spins a ...



Wind turbine: How it works, parts, and existing types

Wind turbines play an essential role in wind power generation. From their beginnings as windmills designed to extract water to their present-day use, these devices are at the forefront of sustainable ...



Contact Us

For catalog requests, pricing, or partnerships, please visit:

<https://www.kidsandparents.pl>

