

Maintenance of the outdoor part of the base station room

ESS



Overview

Here is a quick overview of how remote monitoring works in telecom base stations: Prevents customers from being the first to report network outages, thus protecting revenue. Includes environmental conditions, power conditions, telecom equipment, facility alarms, and tower lights. Tied at its point of use. This approach gives you 24/7 access to real-time data, so you can view critical information and receive instant alerts when anomalies occur. You benefit from lower maintenance costs as fault alarms and. This Design Guide provides the basic criteria to organize, evaluate, plan, program, and design Air Mobility Command (AMC) Security Force (SF) Facilities. Cooling systems must protect critical telecommunication cabinets, energy storage systems and back-up. A base station cabinet is a protective enclosure for the sensitive communication equipment that keeps mobile networks running.

Maintenance of the outdoor part of the base station room



2024 BASE FACILITY STANDARD

A site visit shall be scheduled with the Contractor and Base Officials prior to the first formal plans submittal to review on-the-ground site conditions and the potential impact of proposed site changes ...

What is a Base Station Cabinet?

Learn what a base station cabinet is, how it works, components, benefits, and why outdoor telecom cabinets are crucial for reliable communication networks.



Remote Monitoring for Outdoor Base Stations: FSU and APIs

Key Takeaways Remote monitoring allows you to track outdoor base stations without being on-site, ensuring smooth network operations. Using FSUs and APIs helps you gather real-time data, ...

Security Force Facilities Design Guide

The Combat Arms Training and Maintenance (CATM) Area and Firing Range are normally located at a remote part of the base with the proper clearance zones around it for stray rounds.



Lower cost larger system

20Kwh
30Kwh

Verified Supplier

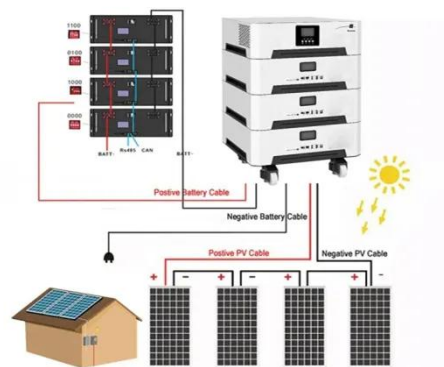


COMMUNICATION SITE BUILDING DESIGN AND INSTALLATION

Self-contained outdoor cabinets (land or rooftop), or semi/fully underground vaults. These are often used where zoning or site availability are issues, sometimes in conjunction with camouflaged towers or ...

Microsoft Word

GR-487 is based on the foundation that the thermal management system must properly maintain equipment with an outdoor ambient temperature range between -40 and +46°C. This ...



Mobile communication base station power supply equipment maintenance



The purpose of its maintenance work is to ensure that the communication equipment has continuous, stable, reliable energy, providing a normal operation of the communication device to ensure the ...

Base Station Installation & Maintenance Test Solutions

Anritsu provides solutions for performance checking during base station installation as well as for maintenance.



Cooling for Mobile Base Stations and Cell Towers

Discover efficient cooling solutions for mobile base stations and cell towers. Learn how thermoelectric coolers enhance performance, reduce energy costs, and extend equipment life.

How to Safeguard Mobile Base Stations from Lightning?

In this article, we break down the key requirements of the industry standard

YD5068-98 - Code for Design of Lightning Protection and Grounding of Mobile Communication Base Stations, and explain ...



Contact Us

For catalog requests, pricing, or partnerships, please visit:
<https://www.kidsandparents.pl>

