

Maximum illumination of photovoltaic panels



Overview

Usually solar panels are exposed to sunlight for longer than this in a given day, but the solar irradiance is less than 1000 W/m² for most of the day. A solar panel can produce more when the Sun is high in Earth's sky and produces less in cloudy conditions, or when the Sun is low in. Solar-cell efficiency is the portion of energy in the form of sunlight that can be converted via photovoltaics into electricity by the solar cell. The efficiency of the solar cells used in a photovoltaic system, in combination with latitude and climate, determines the annual energy output of the. Solar panels convert sunlight into electricity through photovoltaic cells. The amount of electricity generated depends on the intensity and duration of sunlight received. The location and orientation of the. This guide breaks down everything you need to know about solar panel efficiency, including how it's calculated, what the top-performing panels are, and why it matters for California homeowners navigating the post-NEM 3.

Maximum illumination of photovoltaic panels

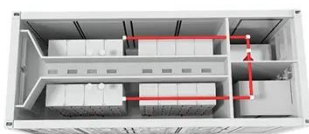


How much illumination can solar panels generate electricity

To determine the amount of illumination solar panels can generate for electricity, several factors come into play. 1. The efficiency of solar panels affects how...

5.2. Light concentration effect on PV performance and efficiency

As you can see, the cell power can raise dramatically because of light concentration, mainly because the cell current is significantly increased. From the maximum power equation, we can further derive the ...



Study on the Influence of Light Intensity on the Performance of Solar

The experimental results show that the open circuit voltage, short-circuit current, and maximum output power of solar cells increase with the increase of light intensity. Therefore, it can be ...

Understanding PV Module Performance Characteristics

Open circuit voltage (V_{oc}) is the maximum voltage available when no current is drawn from the module. It determines the maximum circuit voltage for both a module and an array. You can

...



Standard Test Conditions (STC) of a Photovoltaic Panel

In solar terms, irradiance represents the intensity of sunlight falling on the solar panel. That is, irradiance is an instantaneous measurement of solar power over some area at some point in time ...

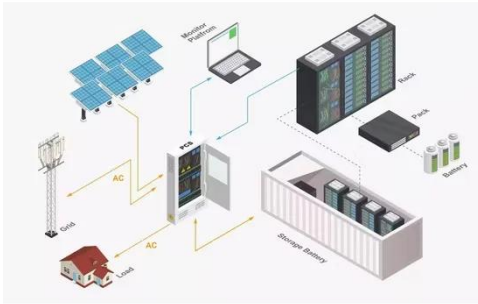
Solar Performance and Efficiency

For example, untreated silicon reflects more than 30% of incident light. Anti-reflection coatings and textured surfaces help decrease reflection. A high-efficiency cell will appear dark blue or black. ...



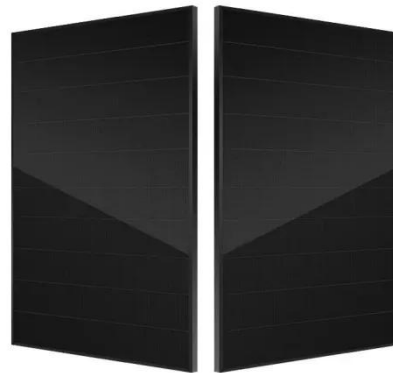
Understanding Maximum Power Point of PV Modules

While Open-Circuit Voltage and Short-Circuit Current are crucial specifications to evaluate, there are other key factors to consider.



Solar-cell efficiency

The maximum power point of a photovoltaic varies with incident illumination. For example, accumulation of dust on photovoltaic panels reduces the maximum power point. [20]



Solar Panel Efficiency Explained: What It Is and Why It ...

Learn what solar panel efficiency means, why it matters in 2025, and how to choose the best panels for your home.

How Much Light Is Needed For Solar Panels To Work?

This blog explores the light conditions necessary for optimal solar panel performance, covering concepts such as

solar irradiance, direct and indirect sunlight, and the impact of shading ...



Contact Us

For catalog requests, pricing, or partnerships, please visit:
<https://www.kidsandparents.pl>

