

Network cabinet installation at a depth of 600mm



- | | | | |
|---|---------------------------|----|---------------------------|
| 1 | PCS Module | 6 | OPV2 side circuit breaker |
| 2 | Battery room | 7 | High Volt Box |
| 3 | Grid side circuit breaker | 8 | BAT side circuit breaker |
| 4 | Load side circuit breaker | 9 | LCD display screen |
| 5 | OPV1 side circuit breaker | 10 | MPPT |



Overview

As a rule of thumb, the maximum internal depth of a server cabinet is approximately 130mm less than the overall outer depth of the cabinet. This product is designed to be installed doors on wood stud walls, solid concrete walls or brick walls. Make sure that the supporting surface will safely support the weight of the equipment and all attached hardware and components. It. Any reason why I should NOT put a wall-mount network rack on a shelf within a cabinet?

I'm looking to build a network/server cabinet - but I'll be building it within in-built cabinetry (around 600mm depth). Airflow, cable space, and power distribution units (PDUs) all come into consideration when determining how deep you should design your server rack. Let's examine. technology (ICT) equipment. Easy for assembled, it only takes 5 minutes for installers.

Network cabinet installation at a depth of 600mm



WALLMOUNTCABINETS600MMD EPTH

MOUNT CABINETS 600MM DEPTH A& G Networks Wall-Mount Data Cabinet provide a secure, easy-to-install and swinging storage solution for information and communications. technology (ICT) ...

OWNER'S MANUAL: 600mm Depth Hinged Swing -Out Network ...

-Installing Cage Nuts in the mounting rails where you plan to install your equipment. You will install cage nuts (included) into the square openings t provide an attachment point for the mounting screws ...



Any reason why I should NOT put a wall-mount network rack on a

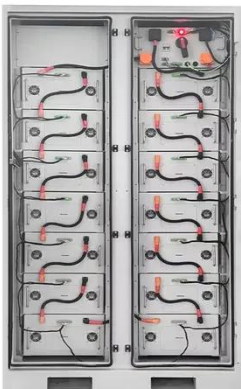
Any reason why I should NOT put a wall-mount network rack on a shelf within a cabinet? I'm looking to a build a network/server cabinet - but I'll be building it within in-built cabinetry (around 600mm depth).

Rack cabinet for home installation

I've looked at some 600mm deep rack cabinets (Lanberg, Extralink - trying to keep cost down), but I'm not experienced enough with racks to know if that will work out for me.



To Strive forward No Energy Waste



- ✓ All in one
- ✓ 100~215kWh High-capacity
- ✓ Intelligent Integration

Microsoft Word

Part NO.

NavePoint 15U 600mm Depth Networking Cabinet (Performance Series)

This Performance Series 15U 600mm depth network cabinet offers reliability, value and versatility in organizing and securing your 19" standard rack-mount servers and networking equipment.



How Deep Should My Server Rack Cabinet Be? A Complete Guide



To determine the ideal depth for your server cabinet, begin by measuring the total depth of your deepest piece of equipment. You'll want to include rear cable clearance and airflow zones in ...

Server Cabinet Buyers Guide , FAQs , Server Room Environments

A 600mm server cabinet will fit through a standard doorway but an 800mm may not. For this reason, we offer flat packed server cabinets for assembly on site once placed into the location they are to be ...



A Guide To Choosing The Depth Of Network Cabinet

Normally, the highest depth that the equipment can be placed should be aligned to the internal depth of the cabinet when the brackets are placed furthest away from each other.

600mm Deep Wall Mount Server Racks & Data Cabinets , Comms ...

These 600mm Deep Wall Mounted Cabinets are ideal for small network installations, where floor space doesn't allow for a Floor Standing

Utility-Scale ESS solutions



Contact Us

For catalog requests, pricing, or partnerships, please visit:
<https://www.kidsandparents.pl>

