

No voltage on one side of the photovoltaic combiner box



Overview

If there is voltage on the input side of the inverter but no output side voltage, there is most likely an inverter problem. If the input side voltage and current from the PV system array are operating at a reduced level, the problem is most likely with an array. As a critical electrical device on the DC side of photovoltaic systems, solar combiner boxes are susceptible to various types of faults, which are often interrelated. Here, we list the 10 most common problems, analyze their primary causes, and provide detailed diagnostic and resolution steps. A solar combiner box serves as the electrical junction point where multiple PV string circuits converge before feeding the inverter. Such loose connections in the solar box may lead to voltage or current output changes. If these wires are left loose, they can cause cable damage, potential fire dangers, and interference with. Small wiring errors inside PV combiners, isolators, and DC disconnects cause outsized losses.

No voltage on one side of the photovoltaic combiner box

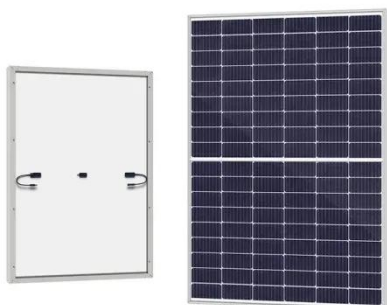


Solar Combiner Box Common Problems & Troubleshooting

When the solar combiner box is grounded incorrectly, it results in electrical faults and equipment damage. Check all the grounding connections and ensure they meet the legal standards.

PV Problem Troubleshooting: Arrays, Batteries, Inverters & More

If there is voltage on the input side of the inverter but no output side voltage, there is most likely an inverter problem. If the input side voltage and current from the PV system array are ...



Solar Combiner Box Troubleshooting: 10 Common Problems and ...

As a critical electrical device on the DC side of photovoltaic systems, solar combiner boxes are susceptible to various types of faults, which are often interrelated. Here, we list the 10 ...

Troubleshooting Solar Combiner Boxes: 6 Common ...

Diagnose and fix solar combiner box faults. A field guide on breaker tripping, blown fuses, terminal overheating, and ground faults for O& M teams.

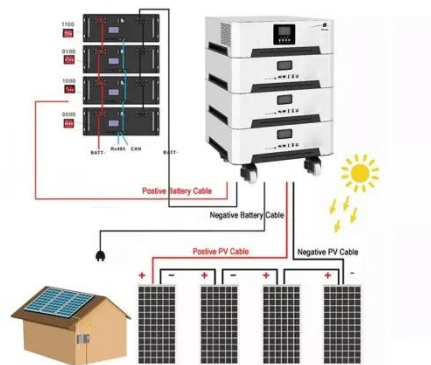


Solar Combiner Box Common Problems & Troubleshooting

When your solar system underperforms, the real culprit is often the solar combiner box--leading to energy loss, safety risks, and costly repairs. Learn how to detect and fix it. The solar combiner box, ...

Solar Combiner Boxes and Voltage Changes: What to Know

You can see that the solar combiner box does not make the voltage go up. It only joins the current from each string. This helps keep your system neat and lets you find problems faster. Tip: Always pick a ...



How to troubleshoot a DC combiner box PV?

As a supplier of DC combiner boxes for PV (photovoltaic) systems, I've seen my fair share of issues pop up with these crucial components. Today, I'm gonna walk you through some common problems you ...

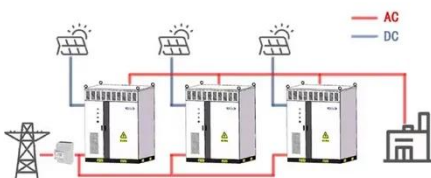


Off grid combiner box problems , DIY Solar Power Forum

If you have voltage from the panels going to the combiner that you tested with a meter, and if there is no voltage on the output of the combiner box that you can measure, than likely a ...



WORKING PRINCIPLE



What are the common problems with combiner boxes?

To troubleshoot a blown fuse, you first need to identify the cause of the overcurrent. It could be a damaged panel, a short in the wiring, or a problem with the inverter. Once you've fixed the ...

Seven wiring mistakes in PV combiner boxes and isolators

This piece pinpoints seven frequent PV combiner box wiring mistakes and solar isolator wiring errors, then gives DC disconnect wiring best practices you can apply on any site, from small ...



Contact Us

For catalog requests, pricing, or partnerships, please visit:
<https://www.kidsandparents.pl>

