

PV combiner box control module



GEL Battery



Lithium Battery



Container storage system



Power Battery



PV combiner box control module



What is a Combiner Box as Used in PV System: A Complete Guide

If you're wondering what is a combiner box as used in PV system, it's a device that connects multiple solar panel strings into a single output for your solar setup. The combiner box ...

Solar Combiner Box -- What It Does and Why It Improves Safety

A combiner box consolidates multiple PV strings into a single output while housing fuses, disconnects, and monitoring equipment. It simplifies wiring and enhances safety.



The Ultimate Guide to Solar Combiner Boxes: From Basics to ...

Explore the comprehensive guide to PV Solar Combiner Boxes: Learn about types, components, selection criteria, installation best practices, maintenance, and advanced technologies. ...

PV DC Combiner Boxes

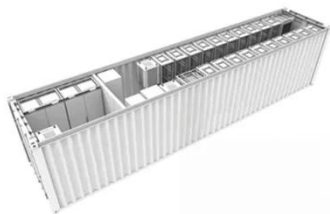
Our DC combiner boxes offer users the possibility to integrate short-circuit and overvoltage protection, as well string monitoring solutions (I, V, T and SPD and switch isolator status), for PV systems using ...



 TAX FREE

1-3MWh

BESS



How to Connect a PV Combiner Box? , Power Home

Connection begins at the PV modules. Each string's output connects to the combiner box's branch input terminals via MC4 connectors. Before wiring, always verify that each string's open ...

Understanding PV Combiner Boxes: Design, Function, Protection, and

A complete guide to PV combiner boxes, covering structure, safety protection, monitoring, IP ratings, selection principles, and future smart trends. Learn how advanced combiner ...



What Is a Combiner Box in a Solar Panel System? Complete Guide



Multiple PV strings enter on separate positive and negative inputs. The box merges them to one or two main outputs. This reduces cable runs to the inverter and keeps the roof clean. I also size the ...

A Comprehensive Guide to Combiner Boxes in Photovoltaic Systems

Combiner boxes play an important role in photovoltaic (PV) installations. This comprehensive guide aims to shed light on the importance, functions, types and best practices of combiner boxes, unlocking the ...



 Efficient Higher Revenue

 Intelligent Simple O&M

 Flexible Abundant Configuration

- Max. Efficiency 97.5%
- Max. PV Input Voltage 600V
- 150% Peak Output Power
- 2 MPP Trackers, 100% DC Input Overvoltage
- Max. PV Input Current 15A, Compatible with High Power Modules
- IP66 Protection Degree: support outdoor installation
- Smart I-V Curve Diagnosis Function: locate PV string faults accurately and automatically detect faults
- DC & AC Type II SPD: prevent lightning damage
- Battery Reverse Connection Protection
- Plug & Play, EPS Switching Under 10ms
- Compatible with Lead-acid and Lithium Batteries
- Max. 6 Units Inverters Parallel
- AFCI Function (Optional): when an arc fault is detected the inverter immediately stops operation



How Does a Solar Combiner Box Work - Explained

A solar combiner box gathers multiple solar panel strings into one output, adds protection and monitoring, and feeds the combined DC power to an inverter safely and efficiently.

The Ultimate Guide to Residential Solar Combiner Box

Its primary function is to consolidate the Direct Current (DC) output from multiple solar panel strings--typically ranging from 2 to 16 strings in residential setups--into a single or limited ...



Contact Us

For catalog requests, pricing, or partnerships, please visit:
<https://www.kidsandparents.pl>

