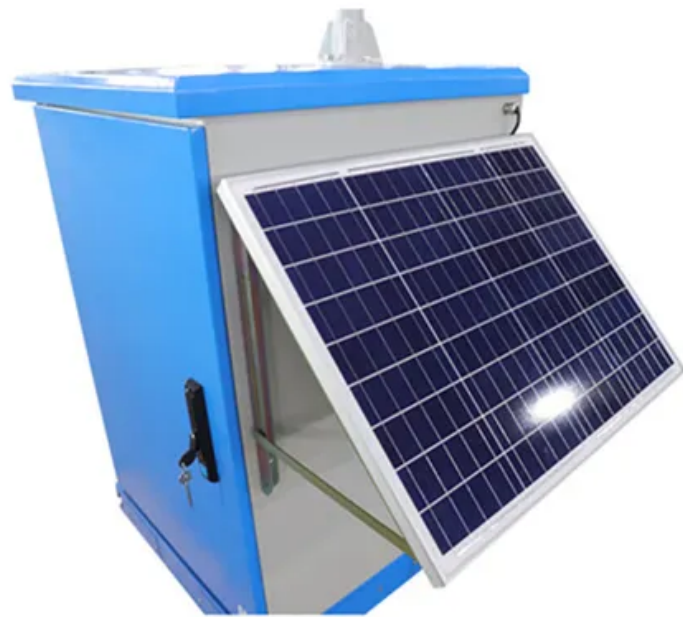


Parts for installing photovoltaic panels on the roof



Overview

What parts are needed to install solar panels on the roof?

To successfully install solar panels on a roof, several key components are necessary: 1. Wiring and electrical components, 5. Professional Installation is Critical for Safety and Warranties: Solar panel mounting involves working at dangerous heights with structural modifications that can void warranties if done incorrectly. Overview of Roof Mounting Accessories A. For asphalt, slate and concrete tile applications: Ideal for trapezoidal, corrugated and standing seam: Zero-penetration ballasted solutions: Certified EPC contractors are recommended for: ✓ Quality Guarantee: Professional installs typically extend system life by 30% ✓ Warranty Protection: Maintain. Install a mounting system for solar thermal or solar photovoltaic panels. Consider the roof type (material and slope), weatherproofing, installation convenience, and wind and snow loadings.

Parts for installing photovoltaic panels on the roof

LIQUID COOLING ENERGY STORAGE SYSTEM

EMS real-time monitoring
No container design
flexible site layout



Cycle Life
≥8000

Nominal Energy
200kwh

IP Grade
IP55

Solar Panel Roof Mounts: Types and Installation Guide

Solar panel roof mounts are specialized hardware systems used to attach solar panels to the roof securely. These mounts serve as the structural support for panels, ensuring they remain in ...

Your Guide To Solar Panel Mounts In 2025

Solar panel mounting systems are now available for all kinds of roofs, from asphalt shingles to clay tiles, to standing seam metal, and everything in between. Modern solar mounting systems consist of roof ...



What parts are needed to install solar panels on the roof?

What parts are needed to install solar panels on the roof? To successfully install solar panels on a roof, several key components are necessary: 1. Solar panels, 2. Inverter, 3. Mounting ...

Roof Anchor System for Solar Panels

For PV modules, the racking and mounting system typically consists of the following: a two-railed track that is bolted into the rafters and onto which the panels are clamped, a flashing component for ...



Roof Mounting Accessories Explained: Hooks, Rails, and Clamps

Understand the key components in a solar roof mounting system -- hooks, L-feet, rails, clamps, and grounding accessories. Learn how each part works together for a safe and reliable ...

The Ultimate Guide to Solar Panel Mounting Systems and Fasteners ...

Choosing the right type of mounting system is the first major decision in any solar project. The choice depends entirely on the installation site, available space, and project goals. Each system ...



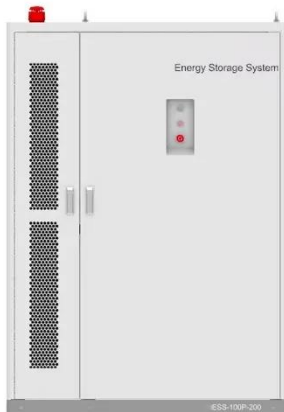
The Complete Guide To Rooftop Solar Mounting [2025]

The equipment used to attach PV panels to a sloped rooftop includes mounting rails, racking, mounting clips, clamps, lag bolts, sealant, flashing, and grounding lugs.



What Parts Do You Need When You Install a Roof Solar?

Are you considering installing a roof solar power plant at home but unclear about which key components you need? Don't worry, this article will provide you with a detailed explanation.



How To Mount Solar Panels To The Roof: Complete 2025 Guide

Learn how to safely mount solar panels to your roof with our step-by-step guide. Covers all roof types, tools needed, safety tips, and when to hire professionals.

Step-by-Step Solar Roof Mounting Guide 2025 , Types & Tips

Complete guide to mounting solar panels on any roof type. Learn about tile, metal & flat roof installations, safety standards and certified mounting systems for DIY or professional setups.



Contact Us

For catalog requests, pricing, or partnerships, please visit:
<https://www.kidsandparents.pl>

