

Peak-shaving and valley-shaving energy storage power station



Peak-shaving and valley-shaving energy storage power station

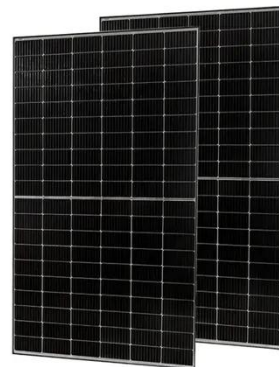


Understanding Peak Shaving and Valley Filling in Energy Management

The Jiangsu power station has significantly improved the peak regulation performance and reliability of the power system, leveraging the peak shaving and valley filling policies to lower ...

Two-Stage Collaborative Scheduling Strategy for Peak Shaving and ...

According to the predicted PV output and time-of-use electricity prices, a weight distribution method based on heuristic rules is adopted to achieve the charging scheduling of EV. In ...



FLEXIBLE SETTING OF MULTIPLE WORKING MODES



Control Strategy of Multiple Battery Energy Storage Stations for Power

Under these circumstances, the power grid faces the challenge of peak shaving. Therefore, this paper proposes a coordinated variable-power control strategy for multiple battery ...

Control Strategy of Multiple Battery Energy Storage Stations for Power

Therefore, this paper proposes a coordinated variable-power control strategy for multiple battery energy storage stations (BESSs), improving the performance of peak shaving.



Peak shaving and valley filling energy storage project

This article will introduce Tycorun to design industrial and commercial energy storage peak-shaving and valley-filling projects for customers.

Peak shaving and valley filling energy storage

Abstract: In order to make the energy storage system achieve the expected peak-shaving and valley-filling effect, an energy-storage peak-shaving scheduling strategy considering the

APPLICATION SCENARIOS



Scheduling Strategy of Energy Storage Peak-Shaving and Valley ...



In order to make the energy storage system achieve the expected peak-shaving and valley-filling effect, an energy-storage peak-shaving scheduling strategy consi

Impact Analysis of Energy Storage Participating in Peak Shaving and

Introduction The application scenarios of peak shaving and valley filling by energy storage connected to the distribution network are studied to clarify the influence of energy storage access on network ...



Peak Shaving and Valley Filling in Energy Storage Systems

What is Peak Shaving and Valley Filling? Peak shaving refers to reducing electricity demand during peak hours, while valley filling means utilizing low-demand periods to charge storage ...

Peak-shaving cost of power system in the key scenarios of renewable

Utilizing the deep regulation capability of thermal power units and energy storage for peak-shaving and valley filling is an important means to enhance the peak-shaving capacity of the ...



Contact Us

For catalog requests, pricing, or partnerships, please visit:
<https://www.kidsandparents.pl>

