

Photovoltaic panel power and voltage relationship diagram



Overview

The diagram illustrates the flow of electricity from the solar panels to the various components of the system, such as batteries, inverters, and the electrical grid. The Solar Cell I-V Characteristic Curves shows the current and voltage (I-V) characteristics of a particular photovoltaic (PV) cell, module or array. It gives a detailed description of its solar energy conversion ability and efficiency. Interconnecting several solar cells in series or in parallel merely to form Solar Panels increases the overall voltage and/or current but does not change the shape of the I-V curve. The I-V curve contains three. utput under differing environmental conditions and panel orientation.

Photovoltaic panel power and voltage relationship diagram



Relationship between voltage and current of photovoltaic panels

Overview: The field performance of photovoltaic "solar" panels can be characterized by measuring the relationship between panel voltage, current, and power output under differing environmental ...

Understanding the Solar Panel Electrical Diagram: A Comprehensive ...

This diagram serves as a blueprint for installing and connecting the components of a solar panel system. It helps electricians and solar panel installers understand the wiring and safety requirements, ...



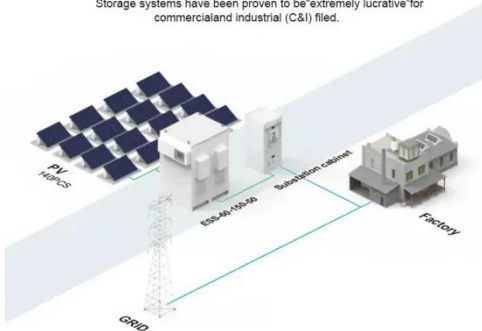
Understanding the Voltage - Current (I-V) Curve of a Solar Cell

The I-V curve contains three significant points: Maximum Power Point, MPP (representing both V_{mpp} and I_{mpp}), the Open Circuit Voltage (V_{oc}), and the Short Circuit Current (I_{sc}). The I-V curve

is ...

BASIC APPLICATION

Storage systems have been proven to be "extremely lucrative" for commercial and industrial (C&I) fields.



Current Voltage (I-V) Measurements in Small Photovoltaic Solar ...

Measurements in Small Photovoltaic Solar Panels (SWR - 18 Feb 2013) Overview: The field performance of photovoltaic "solar" panels can be characterized by measuring the relationship between panel ...



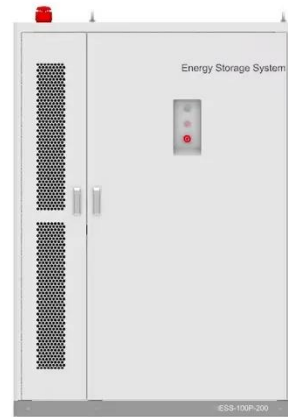
Current-voltage characteristic of a typical solar panel The above

Figure 3 shows the relationship between the electrical voltage and the capacity of the PV panels. There is a peak point in the PV panels called Maximum Power Point (MPP).

Voltage and current relationship of photovoltaic

panel components

The operating point (I, V) corresponds to a point on the power-voltage (P-V) curve, For generating the highest power output at a given irradiance and temperature, the operating point should

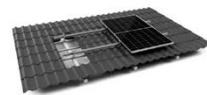


Understanding Solar Panel Voltage and Current Output

Decode solar panels specifications to safely connect your panels to power station or charge controller. This quick guide unlocks full solar potential.

Solar Cell I-V Characteristic Curves of a PV Panel

Solar cells produce direct current (DC) electricity and current times voltage equals power, so we can create solar cell I-V curves representing the current versus the voltage for a photovoltaic ...



TILE ROOF SOLAR MOUNTING SYATEM



STANDING SEAM ROOF SYATEM



ADJUSTABLE TILT FLAT ROOF SYATEM



TRIANGLE FLAT ROOF SYATEM

Photovoltaic (PV)

At a very simple level, PV cells function by using solar energy to generate electron-hole pairs, which then separate and flow in the external circuit as

current.



Contact Us

For catalog requests, pricing, or partnerships, please visit:
<https://www.kidsandparents.pl>

