

Photovoltaic solar panel spacing



Photovoltaic solar panel spacing



Photovoltaic Array Row Spacing Calculator

The row spacing of a photovoltaic array is the distance between the front and rear rows of solar panels. This spacing is calculated to ensure that the rear panels are not shaded by the front panels, ...

How to Calculate the Minimum Distance Between PV Panels?

By following these calculation steps, you can effectively determine the optimal row spacing between solar panels, thereby optimizing system layout and space utilization.

 TAX FREE    

ENERGY STORAGE SYSTEM

Product Model
HJ-ESS-215A(100KW/215KWh)
HJ-ESS-115A(50KW 115KWh)

Dimensions
1600*1280*2200mm
1600*1200*2000mm

Rated Battery Capacity
215KWH/115KWH

Battery Cooling Method
Air Cooled/Liquid Cooled





Determining Module Inter-Row Spacing , Greentech Renewables

When designing a PV system that is tilted or ground mounted, determining the appropriate spacing between each row can be troublesome or a downright migraine in the making. However, it is ...

Rooftop Solar PV Design Guide: Tilt Angle, Row Spacing, and Bifacial

Complete guide to rooftop solar PV design: tilt angles, row spacing, bifacial panels, shading control, and layout tips for flat roof systems.

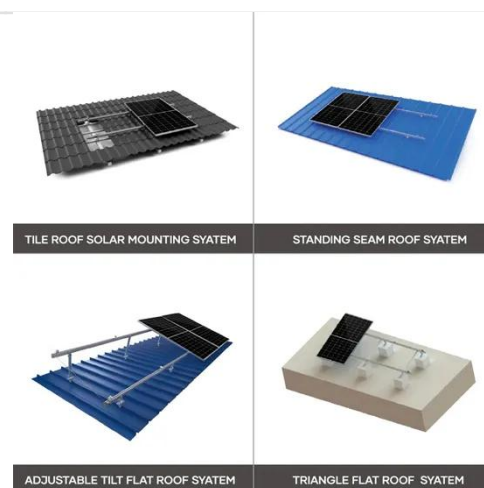


How to Calculate Solar Panel Row Spacing for Maximum Efficiency

To take the guesswork out, we've built a Solar Panel Row Spacing Calculator. Enter your site's latitude, tilt, and azimuth, and it will calculate the minimum spacing needed to avoid shading at ...

Maximize Solar Efficiency: Best Panel Spacing Strategies for 2025

Discover how to boost solar panel performance with optimal spacing in 2025. Avoid shading, improve airflow, and increase energy output using proven techniques and smart formulas.



Optimal Solar Panel Row Spacing Calculator ,



SolarMathLab

Free solar panel spacing calculator to determine optimal row distance based on latitude, tilt, panel height, and season. Reduce shading losses and maximize rooftop or ground-mounted solar efficiency.

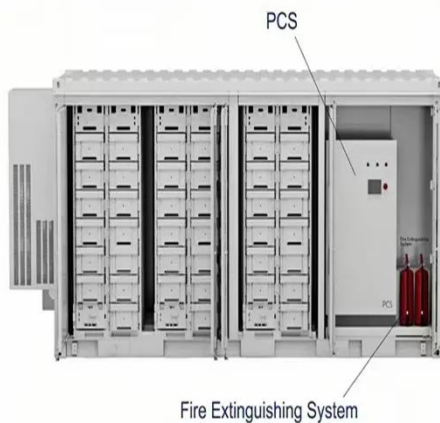
Optimize Solar Panel Performance Through Edge Spacing Design

White EVA with 3mm cell spacing increases power by 3.3% compared to standard modules, while optimal spacing in bifacial modules can improve rear-side generation by 3-5% in field ...

Outdoor Cabinet BESS
50 kWh/500 kWh Battery Storage System
Industrial and Commercial Energy Storage



- All in One**
Integrating battery packs
- High-capacity**
50-500kWh
- Degree of Protection**
IP54
- Operating Temperature Range**
-20-60°C (Derating above 50 °C)
- Intelligent Integration**
Integrated photovoltaic storage cabinet
- Rated AC Power**
50-100kW
- Altitude**
3000m(>3000m derating)



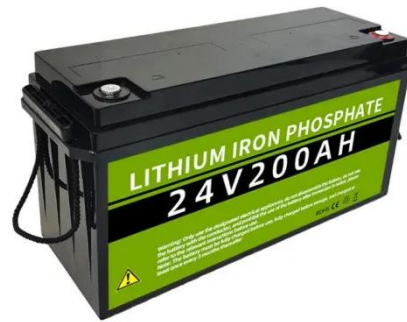
Optimizing Solar Panel Spacing for Maximum Efficiency

Proper solar panel spacing is key to improving performance and efficiency. Learn how to calculate and optimize spacing for maximum solar power production.

The Importance of Solar Panel Spacing

To ensure optimal energy production,

proper spacing of solar panels is crucial. This article will explore the ins and outs of solar panel spacing, row configuration, and tilt, uncovering the secrets to ...



Contact Us

For catalog requests, pricing, or partnerships, please visit:
<https://www.kidsandparents.pl>

