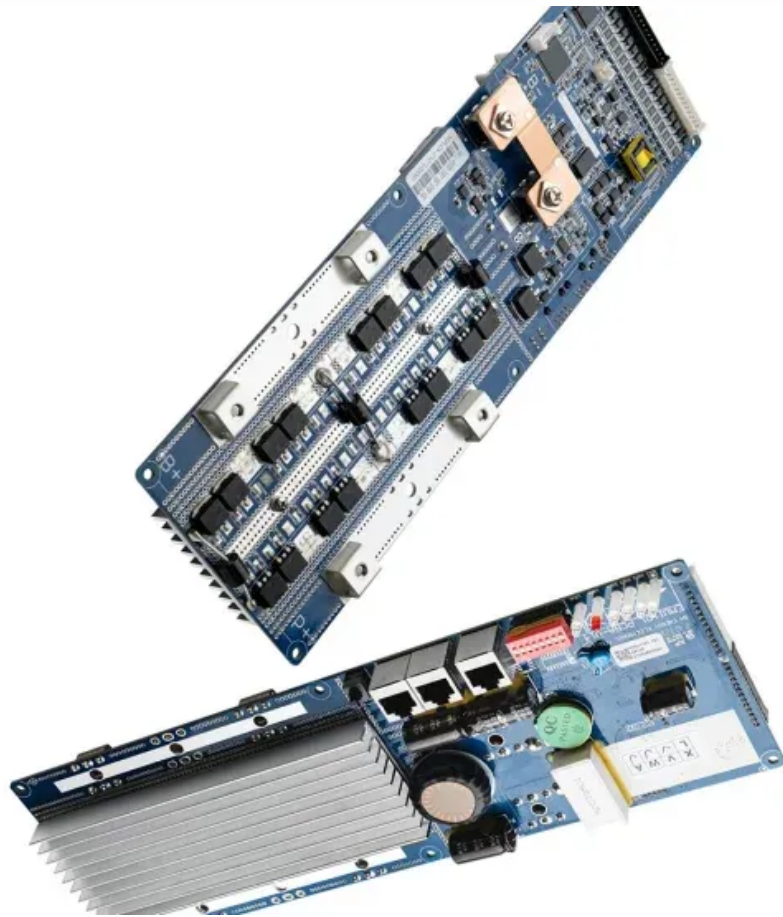


Power requirements for floor communication base stations



Overview

Maximum base station power is limited to 24 dBm output power for Local Area base stations and to 20 dBm for Home base stations, counting the power over all antennas (up to four). This article clarifies what communication batteries truly mean in the context of telecom base stations, why these applications have unique requirements, and which battery technologies are suitable for reliable operations. We discuss factors that influence power system design for these three applications below. A secure backup power system minimizes downtime, protects sensitive equipment, and safeguards public. When natural disasters cut off power grids, when extreme weather threatens power supply safety, our communication backup power system with intelligent charge/discharge management and military-grade protection becomes the "second lifeline" for base station equipment. 45V output meets RRU equipment. Baseband Unit (BBU): Handles baseband signal processing.

Power requirements for floor communication base stations



Communication Base Station Backup Power Selection Guide

Choosing the Appropriate Standby Power Supply Is Very Important for the Stable Operation of the Communication Base Station. This Article Will Introduce How to Select an ...

Complete Guide to 5G Base Station Construction , Key Steps, ...

Explore how 5G base stations are built--from site planning and cabinet installation to power systems and cooling solutions. Learn the essential components, technologies, and challenges ...



Power Base Station

Maximum base station power is limited to 24 dBm output power for Local Area base stations and to 20 dBm for Home base stations, counting the power over all antennas (up to four).

Communication Base Station Backup Battery

When natural disasters cut off power grids, when extreme weather threatens power supply safety, our communication backup power system with intelligent charge/discharge management and military ...



Power requirements for floor communication base stations

The document discusses power requirements for Flexi Multiradio base stations, including site grounding and earthing recommendations to protect equipment from over voltages.

Securing Backup Power for Telecom Base Stations - leagend

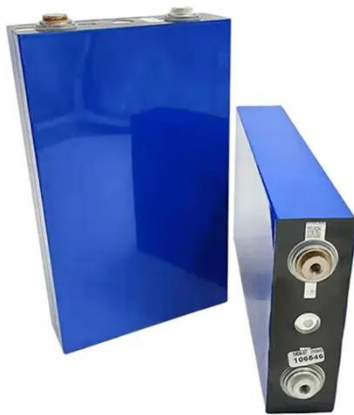
This article will explore in detail how to secure backup power for telecom base stations, discussing the components involved, advanced technologies, best practices, and future trends to ...

- ✓ LIQUID/AIR COOLING
- ✓ INTELLIGENT INTEGRATION
- ✓ PROTECTION IP54/IP55
- ✓ BATTERY /6000 CYCLES



Mobile Communication Base Stations

Base stations must operate 24/7/365.



Core energy consumption comes from the main equipment (RRU/BBU), air conditioning, and power supply systems (switching power supplies and batteries).

...

Communication Batteries: Why Telecom Base Stations Have Unique ...

The phrase "communication batteries" is often applied broadly, sometimes including handheld radios, emergency devices, or general-purpose backup batteries. In practice, when ...



ESS



Communications System Power Supply Designs

Voice-over-Internet-Protocol (VoIP), Digital Subscriber Line (DSL), and Third-generation (3G) base stations all necessitate varying degrees of complexity in power supply design. We discuss factors ...

ICNIRP , Base Stations

Over large distances, the signals must be relayed by a communication network

comprising base stations and often supported by a wired network. The power of a base station varies (typically between 10 ...



Contact Us

For catalog requests, pricing, or partnerships, please visit:
<https://www.kidsandparents.pl>

