

Purpose of alternator in car



Purpose of alternator in car



What Is an Alternator Used For in a Car?

The alternator in an automobile is a self-contained electrical generator that produces the power necessary to operate the vehicle's electrical systems. This cylindrical component is typically ...

What is the purpose of an alternator?

Can an alternator charge a car battery? That is the purpose of an alternator. The keep the battery charged and to run all the electrics on the vehicle.



How do the diodes in an alternator work?

What is the purpose of a diode in an alternator? The diodes are part of the rectifier assembly that converts the alternator's AC output to DC.

What is the purpose of a car

battery?

Are car batteries large enough to recharge? Since one purpose of the alternator/generator is to keep the battery charged, yes.



51.2V 150AH, 7.68KWH



What is the function of a rectifier within an alternator?

What is the purpose of a diode in an alternator? The diodes are part of the rectifier assembly that converts the alternator's AC output to DC.

What is an alternator gauge?

This is a misnomer. Electrical system function is gauged by either a voltmeter or an ammeter. The voltmeter measures system voltage, and should read around 18 volts with the engine ...



Car Alternator Guide 2025 , Symptoms, Cost & Easy Fix

What Does an Alternator Do? An alternator is a critical component in a vehicle's electrical system, converting



mechanical energy into electrical ...

Alternator Explained: How It Powers Your Car and ...

The alternator is the unsung hero of the complex automotive world; it ensures a constant flow of electrical power. Powering the vehicle's electrical ...



What is the purpose of an exciter diode in an alternator?

There are three exciter diodes on all alternators. They are connected to the stator windings. The purpose of the diodes is twofold. While the engine is running, it turns off the alternator

What is the purpose of the fan or alternator belt?

Any belt in a car assists in moving all parts within the engine to work in providing power and cooling to vehicle.

The alternator provides power to the battery and the fan cools the radiator so



RS485
Communication between battery and inverters
Baud rate:9600bps

RS485 Interface
Communication between parallel packs or BMS and PC
Baud rate:9600bps

Alternators: How They Work, Why They Fail, and How ...

The alternator is a device that keeps your car's electrical system running once the engine is on. It's essentially a small generator that converts ...

What is the purpose of the alternator in a car?

To maintain the charge of the battery and provide power for accessories.



What Does an Alternator Do? How It Powers Your Vehicle

The alternator is a mechanical device that generates electricity for your car. It's typically located at the front of the

engine and is driven by the serpentine belt.



What is the Purpose of a Car Alternator? How Does It Work?

The alternator is the powerhouse of your car's electrical system. It ensures the battery stays healthy, powers all electronics, and keeps the engine running smoothly.



Role Of An Alternator In Cars: Essential Function ...

Without it, your car wouldn't be able to power essential systems like the lights, radio, or even the engine itself. Understanding the role of an ...

What does an alternator do: how it works, its function, ...

An alternator is your vehicle's central electrical component, responsible for converting mechanical energy from the

engine into electrical ...

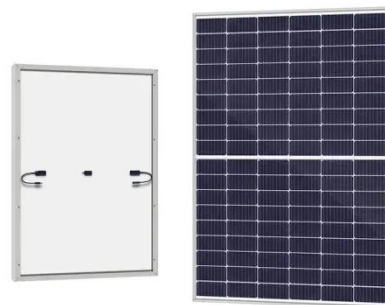


What is the purpose of a alternator?

A car alternator generates alternating current, then uses a rectifier to convert the alternating current to direct current, it charges your battery and supplies the current to run all the

What Is An Alternator In A Car? Functions, Workings, ...

What Is an Alternator? An alternator is a type of electric generator used in internal combustion engine vehicles in a modern car's electrical ...



Purpose of brake servo

The purpose of the brake servo is to provide power assistance to the braking system when then brake pedal is pushed. The brake servo is usually a flat

drum-shaped unit to the rear of ...



Contact Us

For catalog requests, pricing, or partnerships, please visit:
<https://www.kidsandparents.pl>

